

# Paul Holme Strays

Andrew Ward-Campbell

3<sup>rd</sup> June 2014

# Outline

- ➔ Humber flood risk management strategy
- ➔ Designations in the Humber Estuary
- ➔ Managed realignment in the Estuary
- ➔ Paull Holme Strays

# Humber Flood Risk Management Strategy

- ➔ Strategic approach to the long term management of flood risk within the Humber Estuary.
- ➔ Gained financial approval from Defra in 2007 for the first 25 years of work.
- ➔ Three main parts to overall approach:
  - ➔ Improve or maintain defences
  - ➔ Identify where defences couldn't justifiably be improved
  - ➔ Make space for water (e.g. by providing flood storage in the upper estuary)

# Humber Flood Risk Management Strategy

- ➔ Partnership funding introduced in 2011
- ➔ Review of Strategy started in 2011
- ➔ Tidal surge event in December 2013
- ➔ Various working groups
  - ➔ Officers Group
  - ➔ Steering Group
  - ➔ Elected Members

# Designations in the Humber Estuary

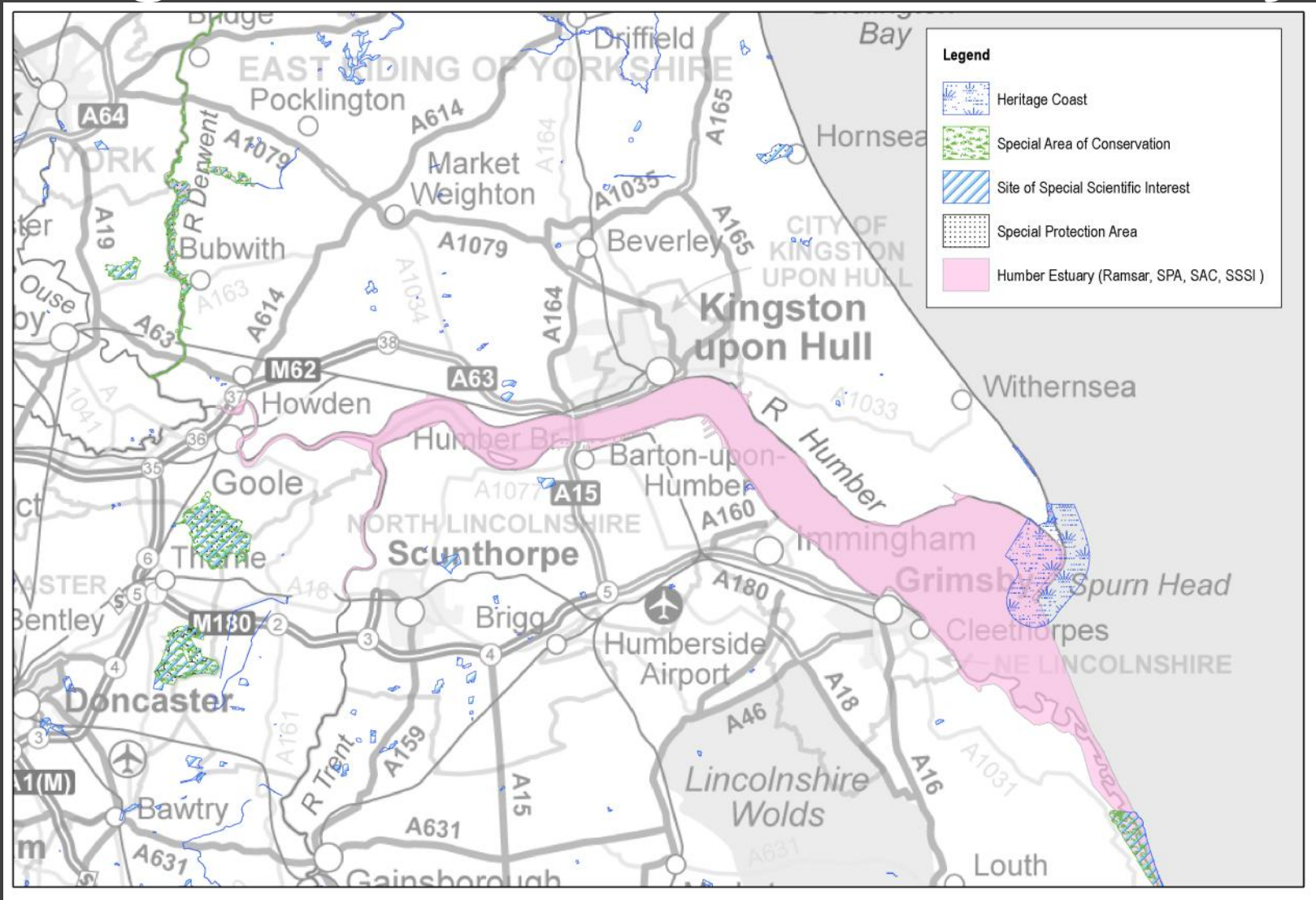
➔ Special area of conservation

➔ Special protection area

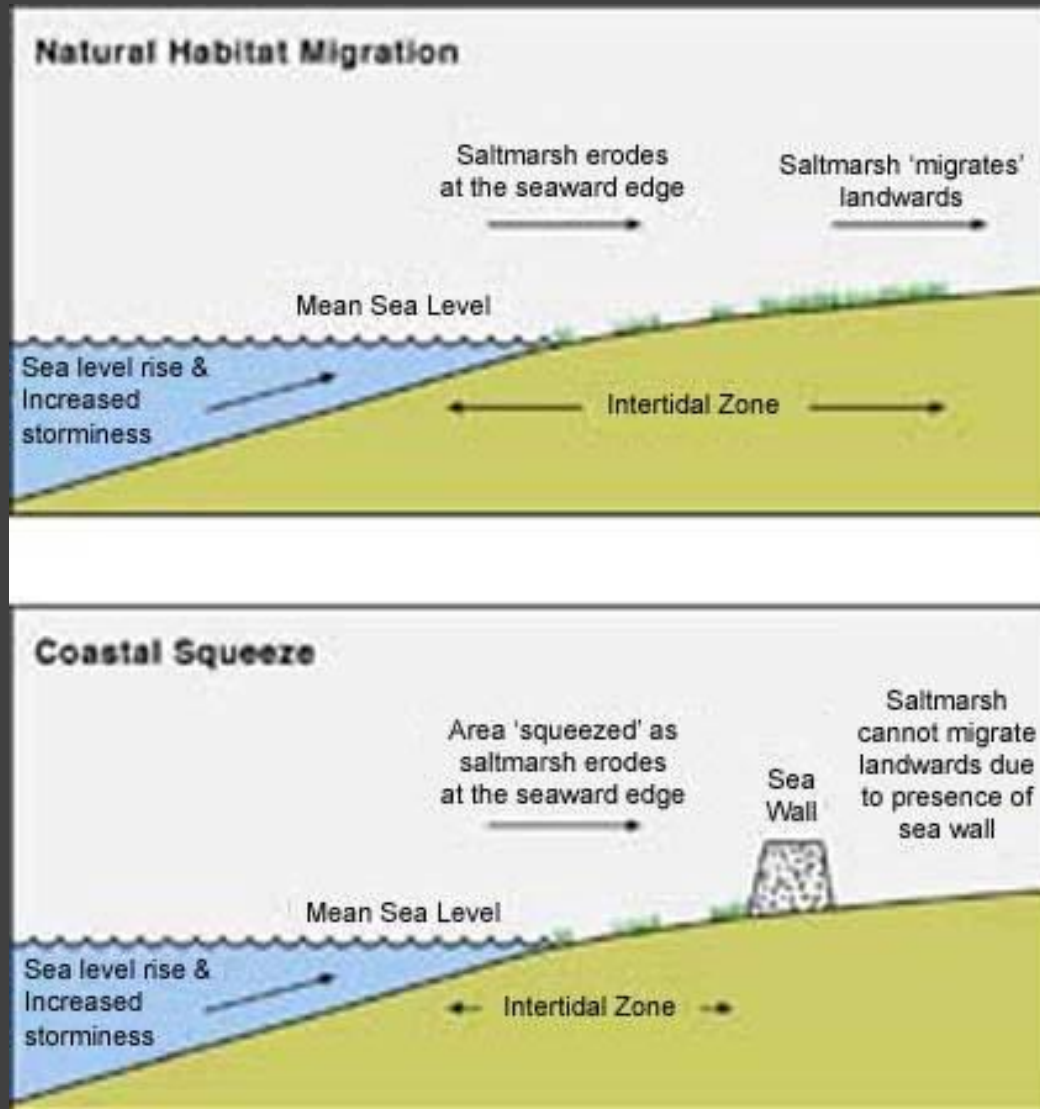
➔ Ramsar

➔ Site of Special Scientific Interest

# Designations in the Humber Estuary



# Coastal squeeze



# Managed realignment in the Estuary

## ➔ Three main reasons for managed realignment:

- ➔ To improve the standard of protection
- ➔ To compensate for indirect loss of habitat
- ➔ To compensate for direct loss of habitat

## ➔ Managed Realignment sites in the Estuary:

- ➔ Paull Holme Strays
- ➔ Alkborough
- ➔ Donna Nook (almost!)
- ➔ Welwick (ABP)
- ➔ Chowder Ness (ABP)





# Any Questions?