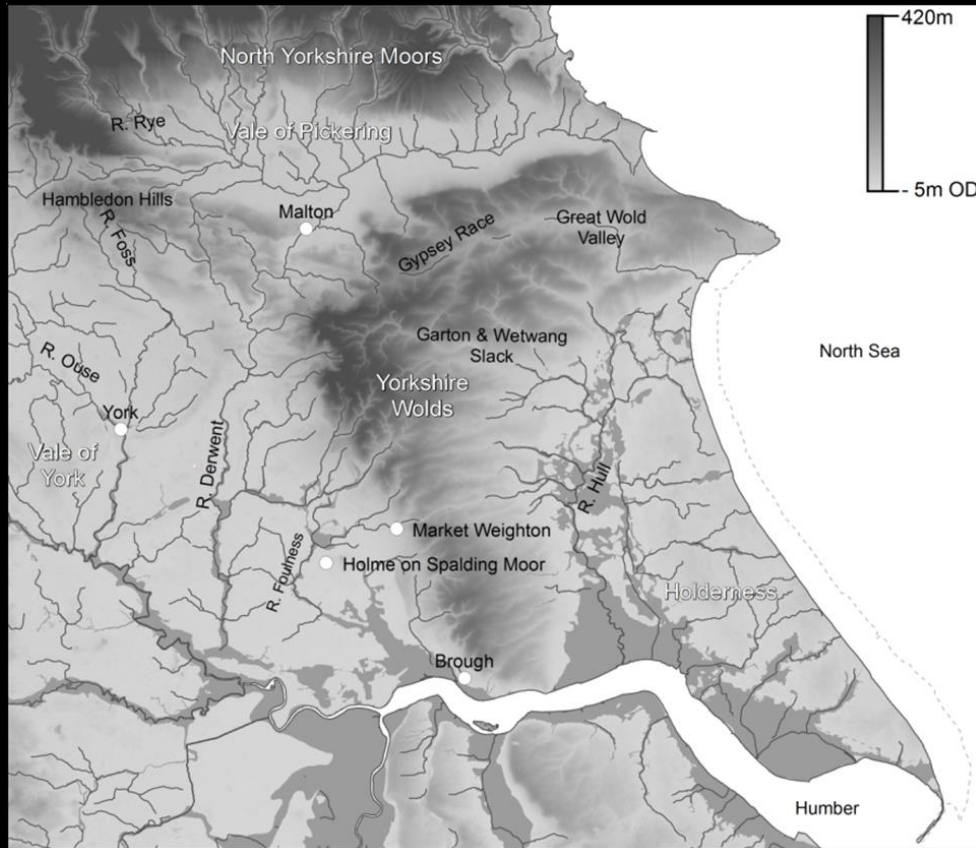


THE CHANGING LANDSCAPE OF THE HUMBER REGION

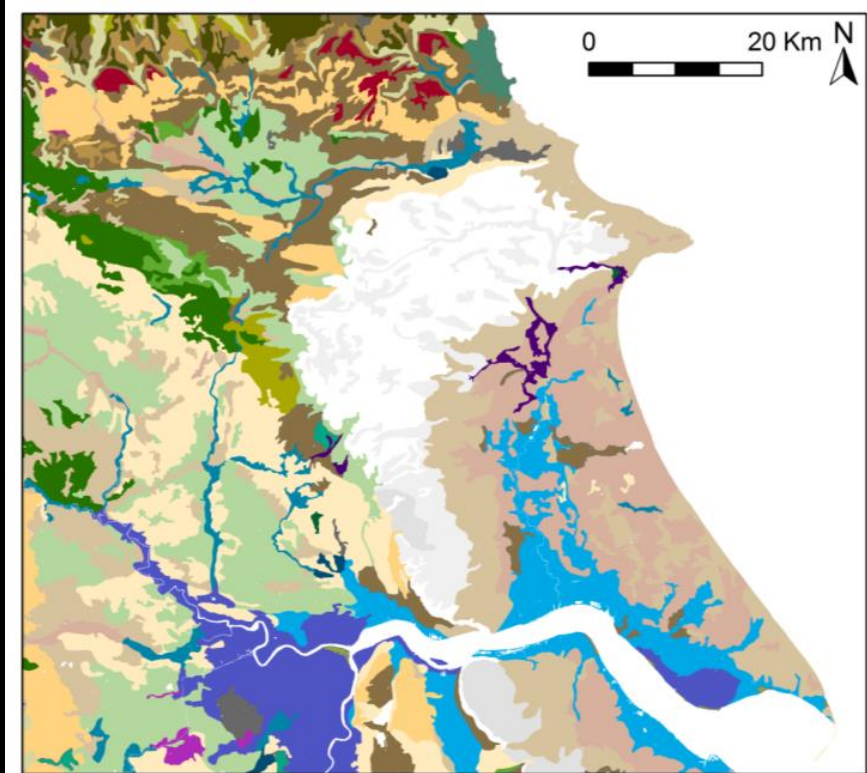
Dr Peter Halkon
Senior Lecturer in Archaeology
Department of History
University of Hull
a.p.halkon@hull.ac.uk

LOCATION

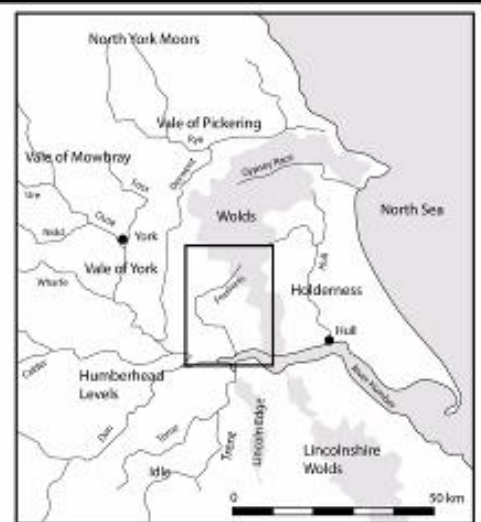


----- Estimated line of the Roman coast

Wetlands

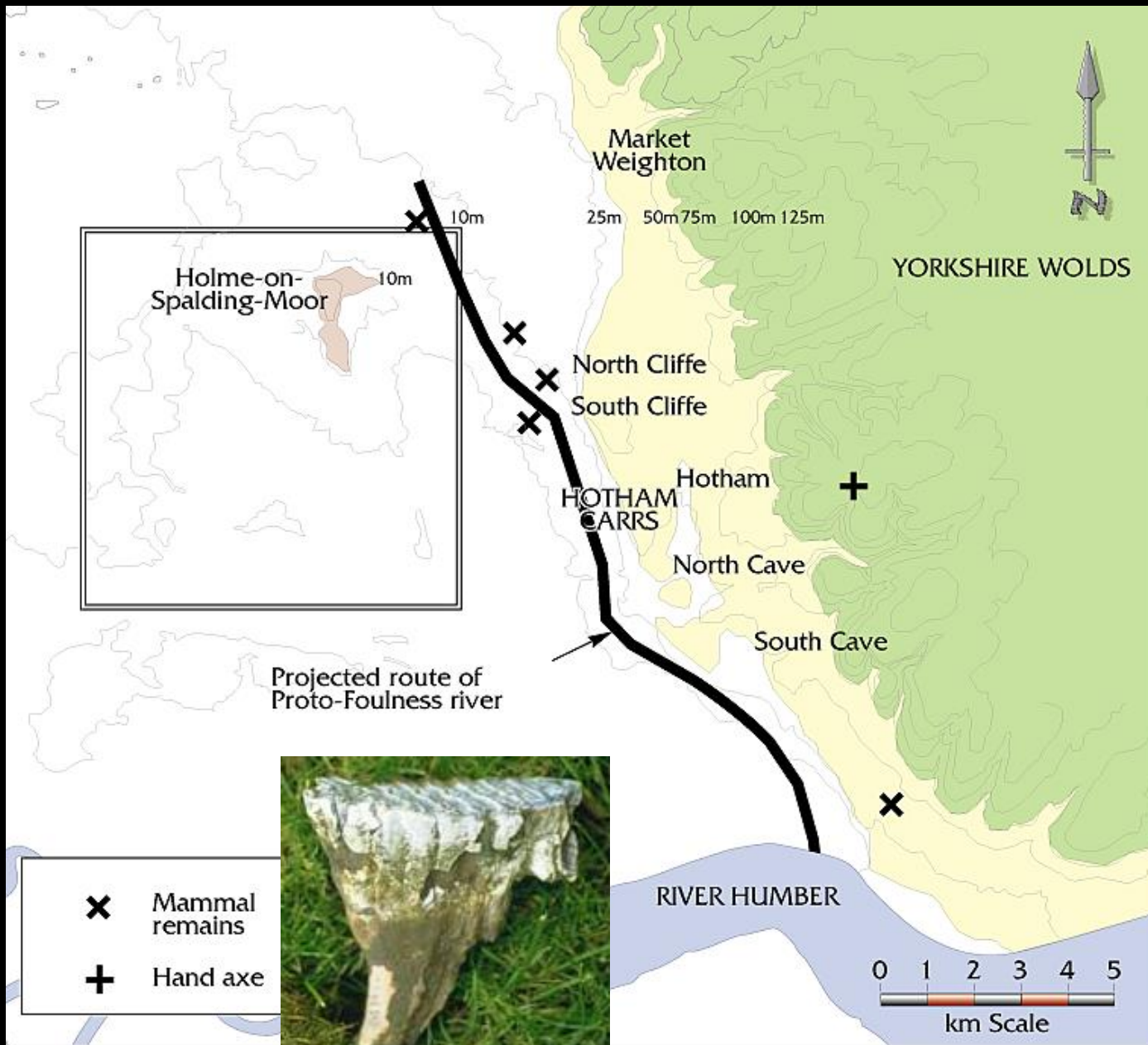


Location



Palaeolithic finds

-  Triassic Mercia Mudstone
-  Jurassic rocks
-  Cretaceous Chalk
-  Quaternary Deposits
-  Area of main survey



-  Mammal remains
-  Hand axe



Palaeolithic



Palaeolithic

Vale of York

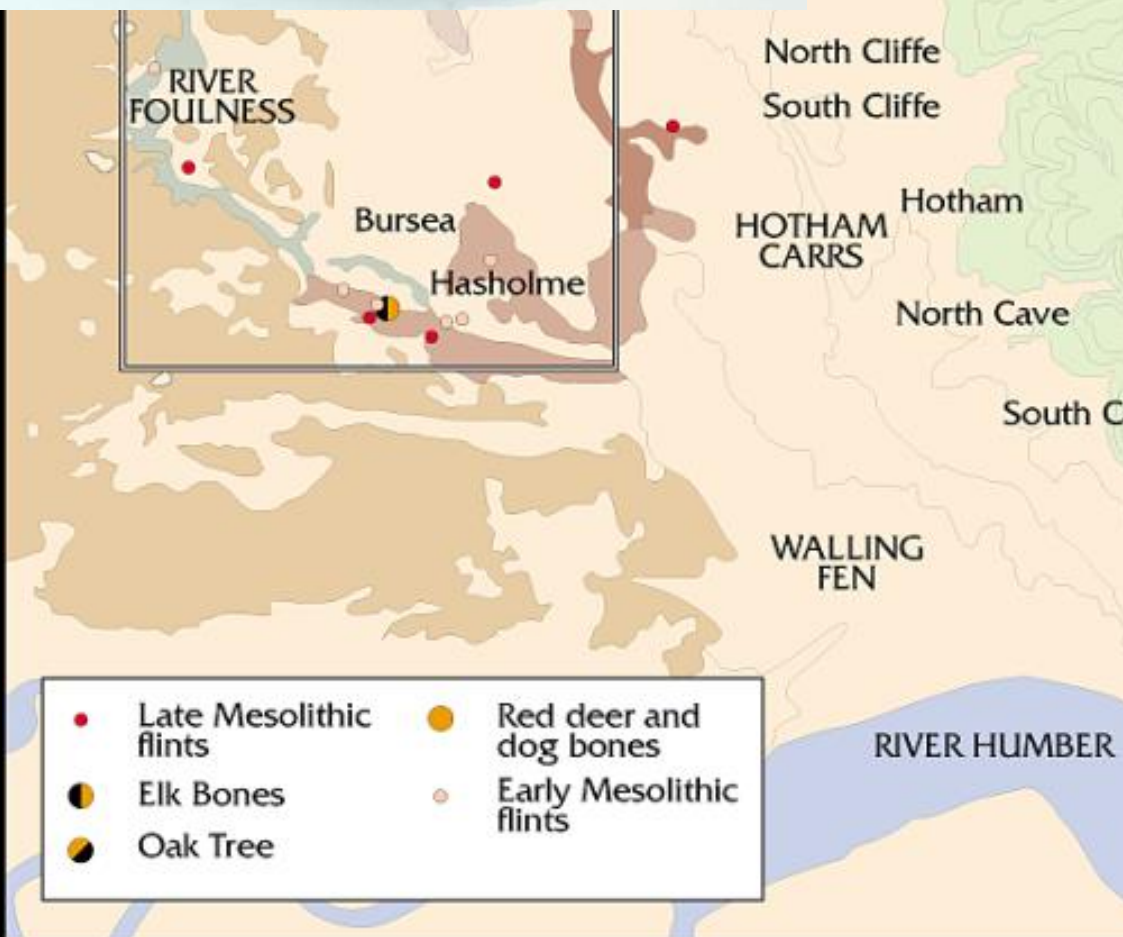




Reconstruction of a Neanderthal man in a modern suit, at the Neanderthal Museum.
Einsamer Schütze via Wikimedia Commons, CC BY-SA



Late/Early Mesolithic finds

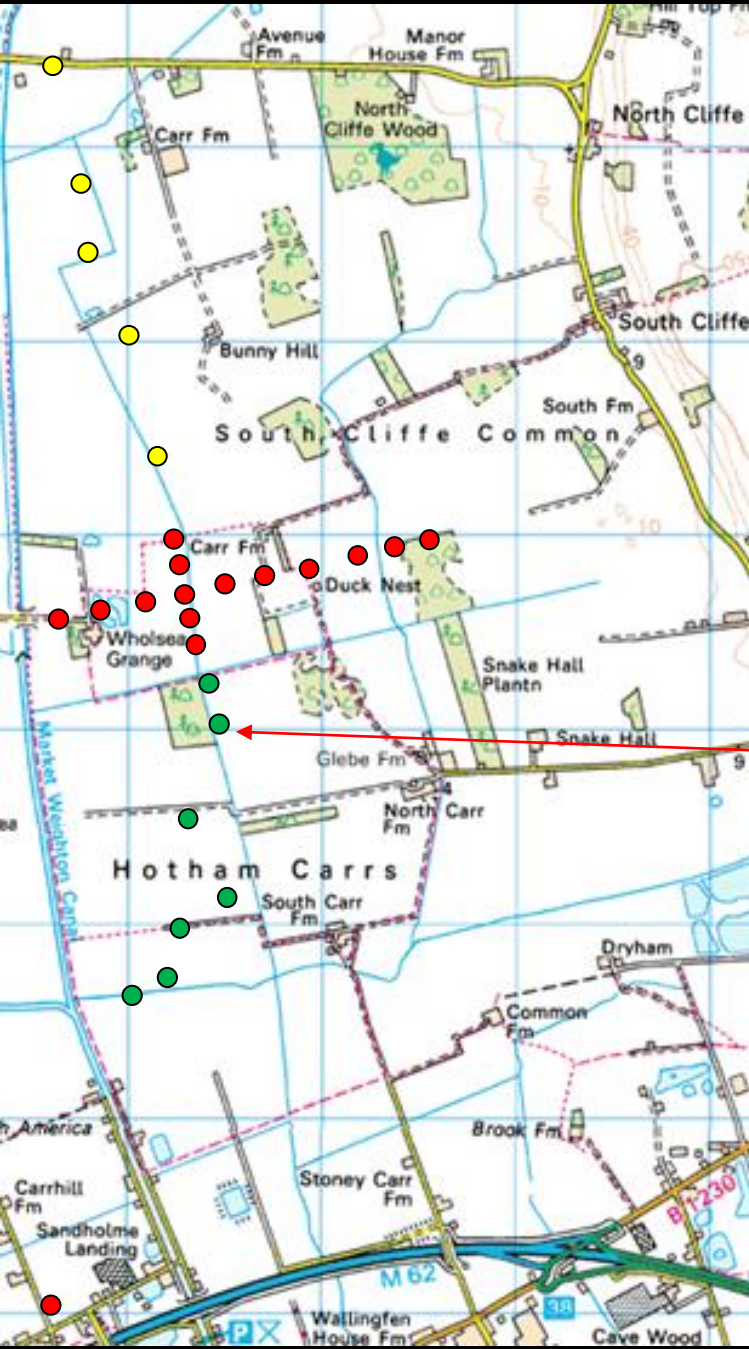




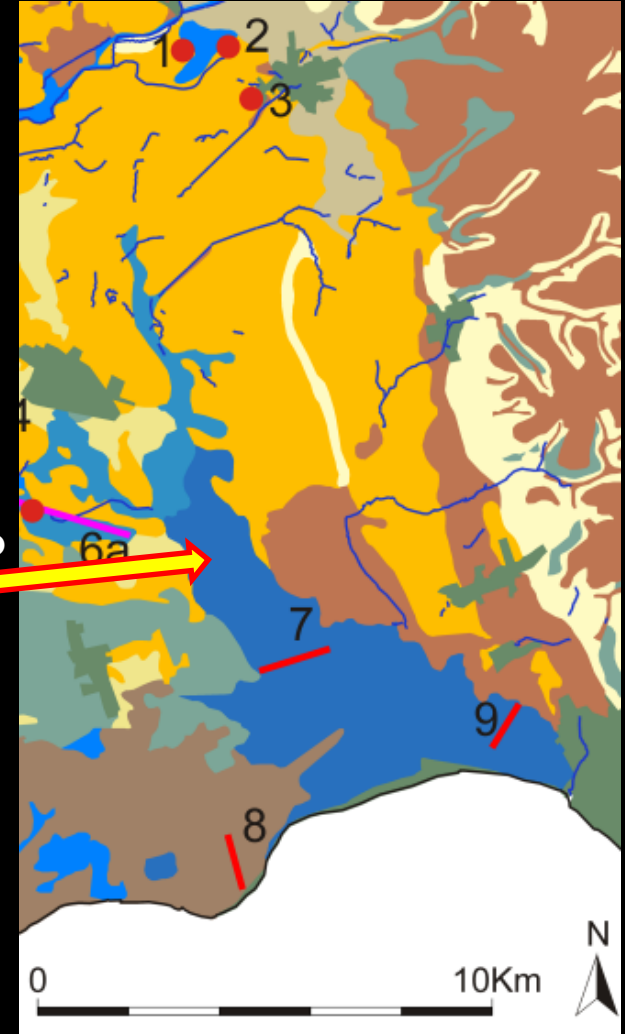
**Everingham Carrs
August 2010**



Climate and sea level change



Brackish deposits at -2 to -2.2 m OD = limit of transgression in Mesolithic / early Neolithic?



Thanks to Anna Coles, Dept of Geography, University of Durham

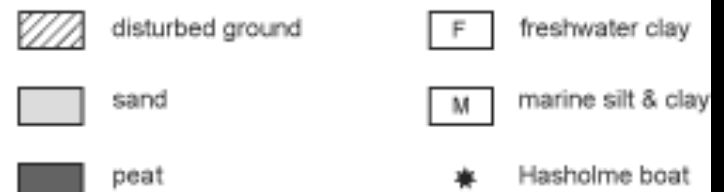
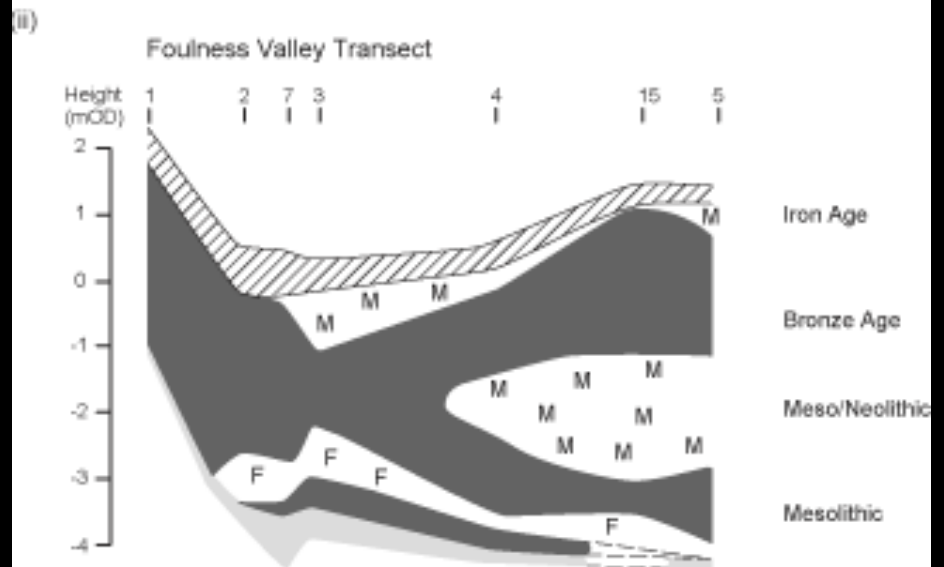
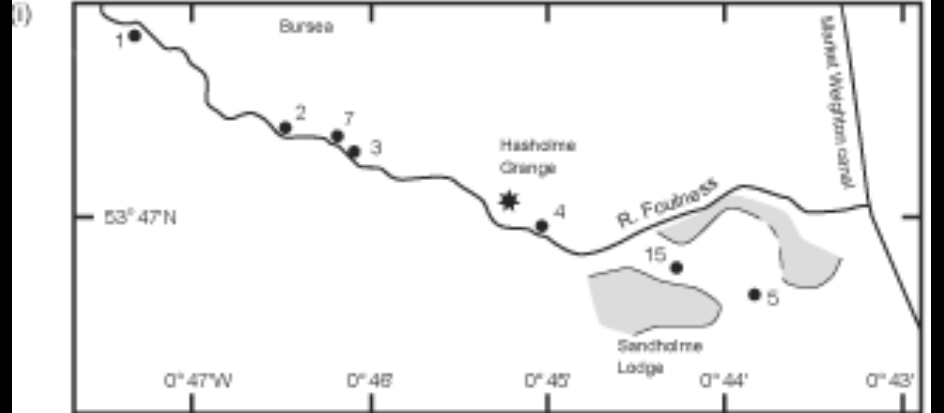
Zone 2 - **Hawling Road Market Weighton** - naturally felled oak (4834-4576 cal BC (2 Sigma) (GU5001)) with alder in a layer of peat containing bones of dog and deer underlying alluvial clay, shows effects of transgression felt far upstream

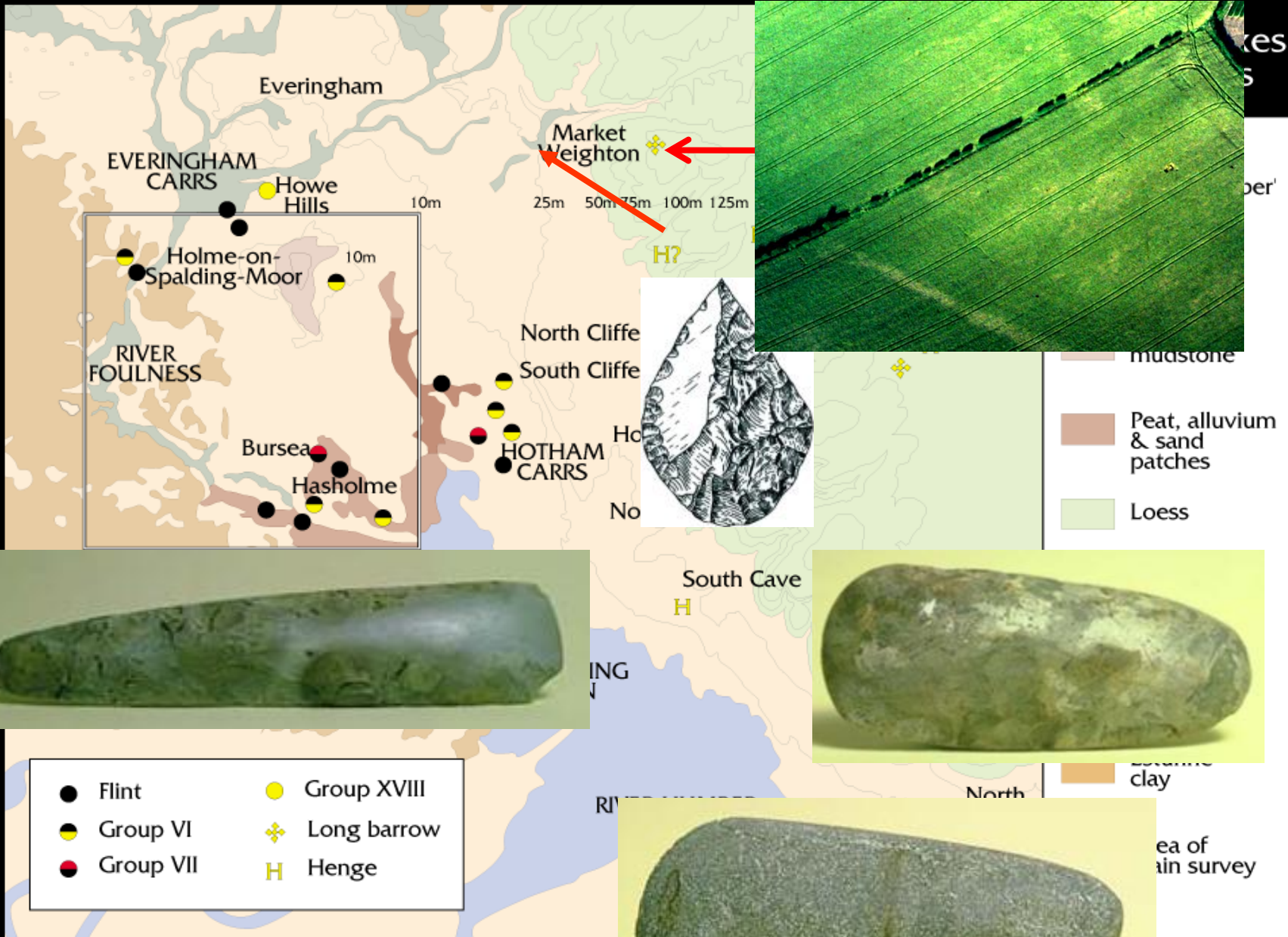


LATE MESOLITHIC/NEOLITHIC TRANSITION

Marine Transgression

Zone 3 - 4789- 4352 cal BC (2 sigma) (SRR-4894). Peat-forming freshwater wetlands inundated by a marine transgression that established estuarine conditions and deposited intertidal clays, creating estuarine inlet on inner Humber system for well over a 1000 years.





Neolithic



Sickle



Scraper



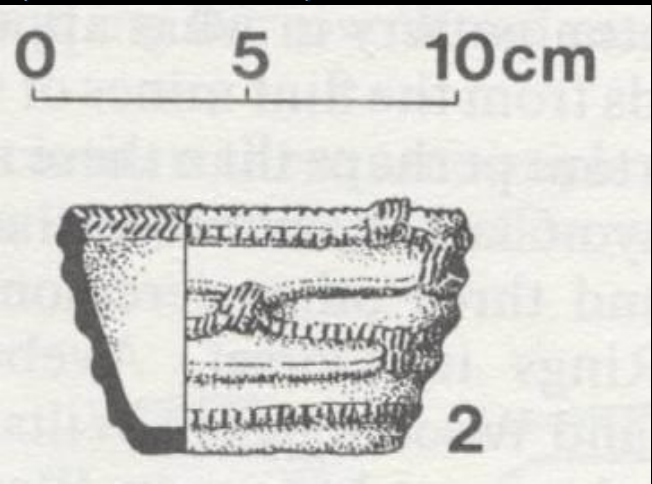
Saddle quern

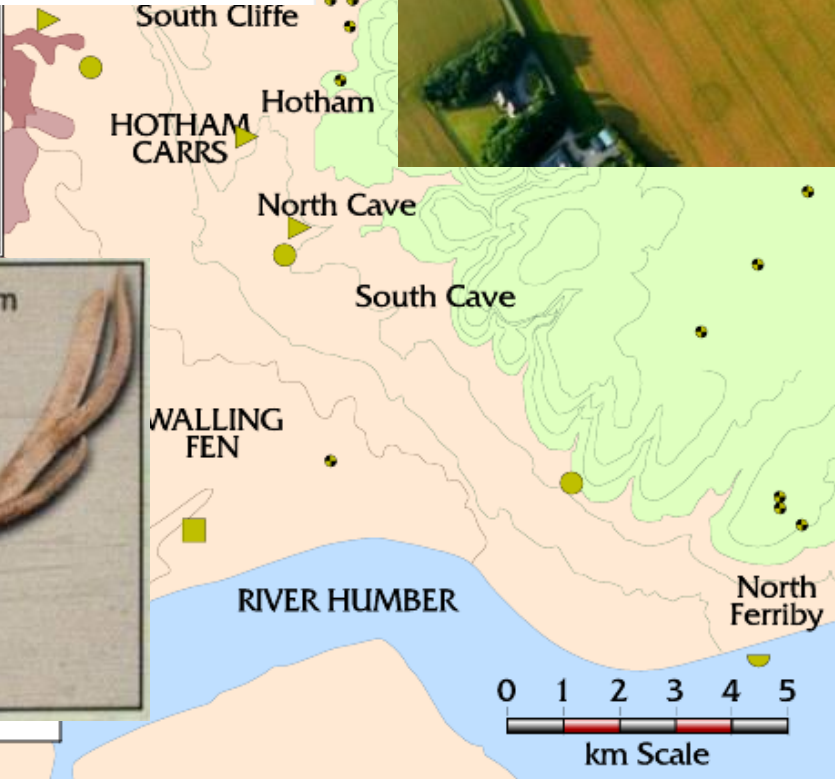


Woodlands Style Grooved ware pottery –
Burnby Lane, Hayton

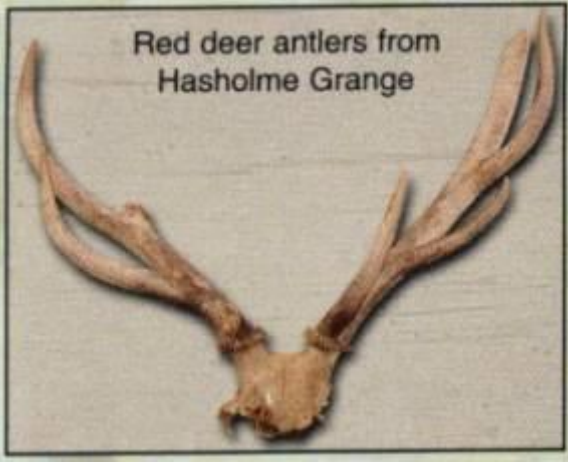
Pit with Grooved ware pottery, cattle bone,
hazelnuts

2900 - 2870 cal BC (68%)
2920 - 2860 cal BC (98%)
2810 – 2690 cal BC (98%)
(Lab. No Beta 223633)





Loess



- B
- ◐ B
- S

Bronze Age

Ferriby Boats

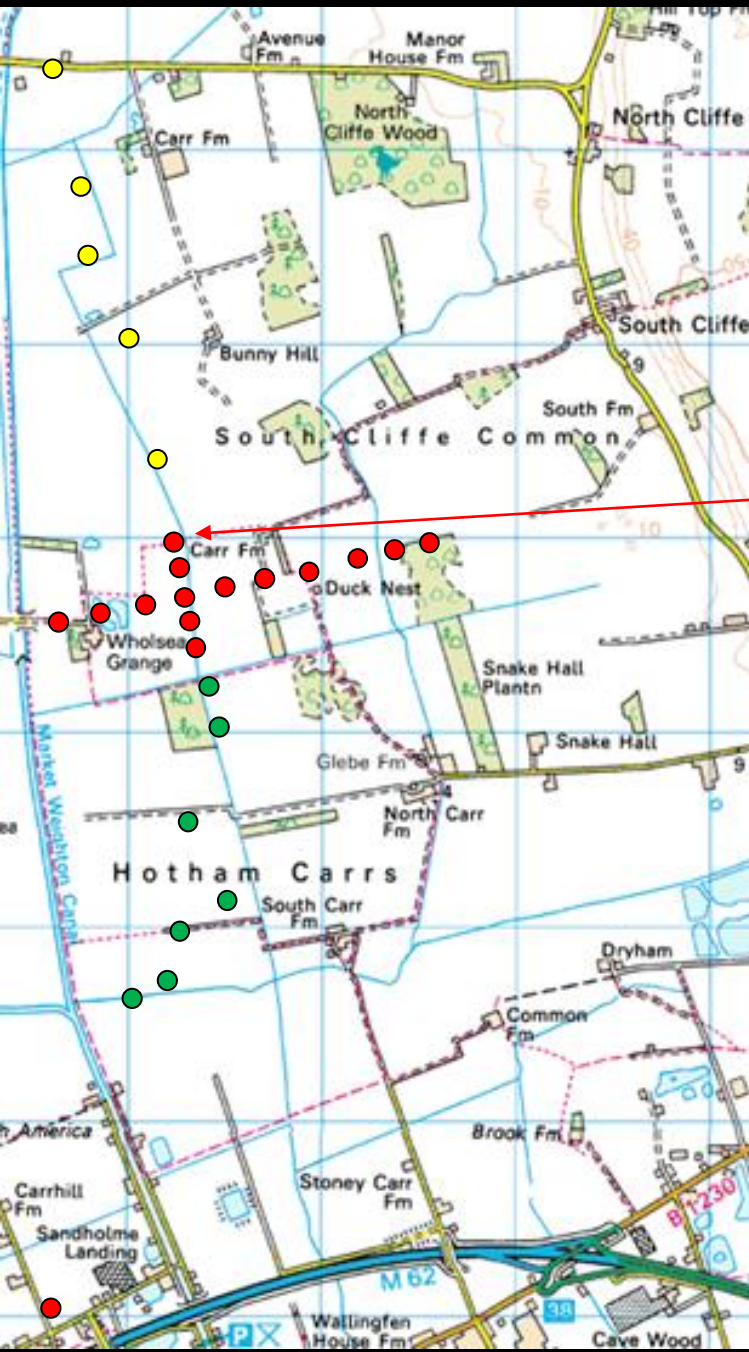
2030-1780 - cal BC - boat 3

1940-1720 cal BC - boat 2

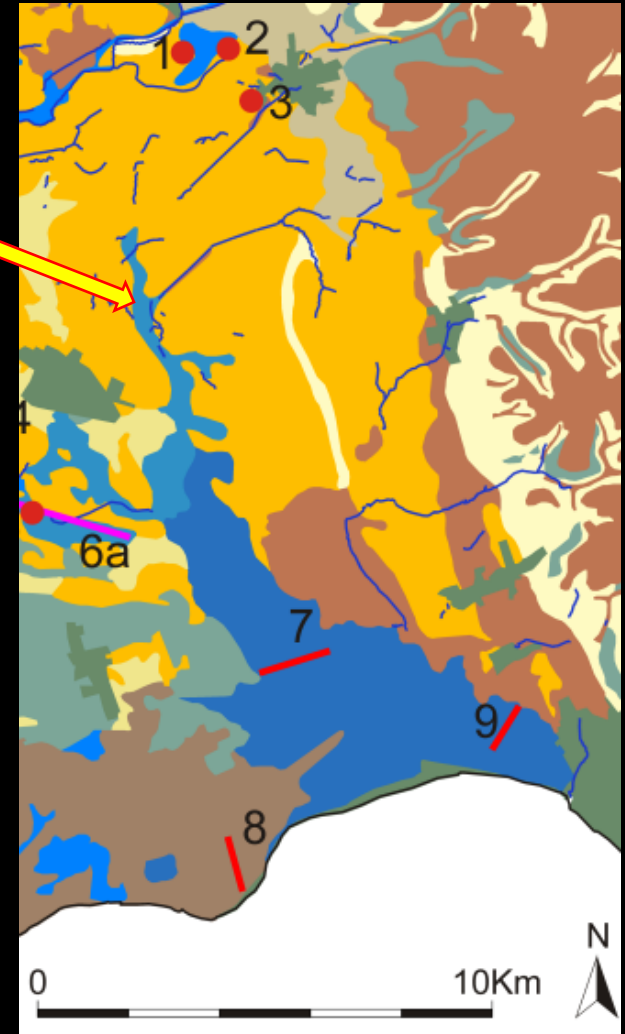
1880 – 1680 cal BC - boat 1



Climate and sea level change



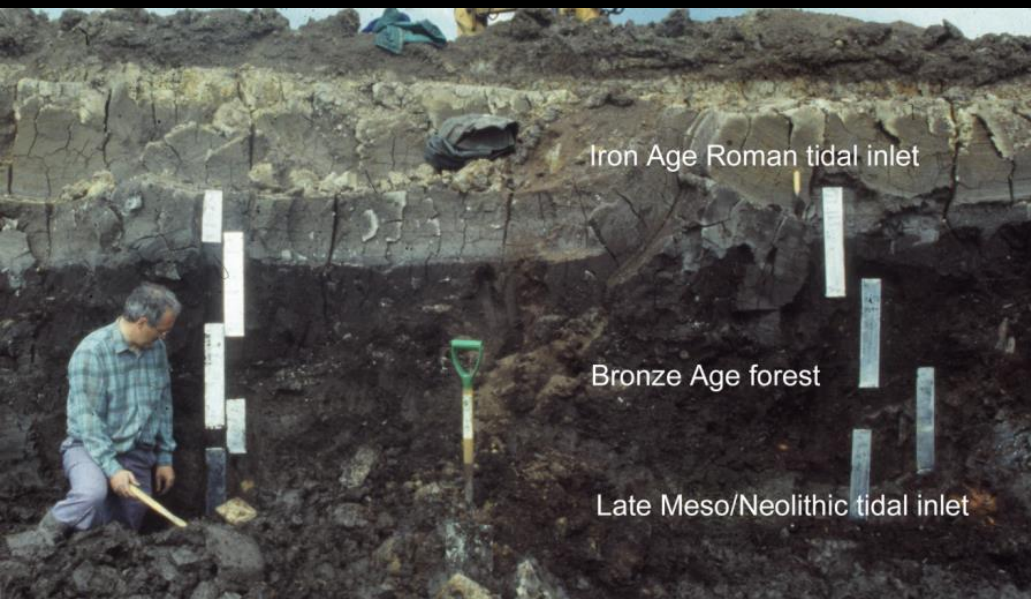
- Marine deposits at 0.5 to -0.7 m OD = transgression in c. 800-300 BC?



Thanks to Anna Coles, Dept of Geography, University of Durham



Bronze Age tree at Hasholme



Humber Tidal Surge 2013 BBC Look North



Marine transgression c. 800 - 500 BC



**Hasholme
logboat
1984**



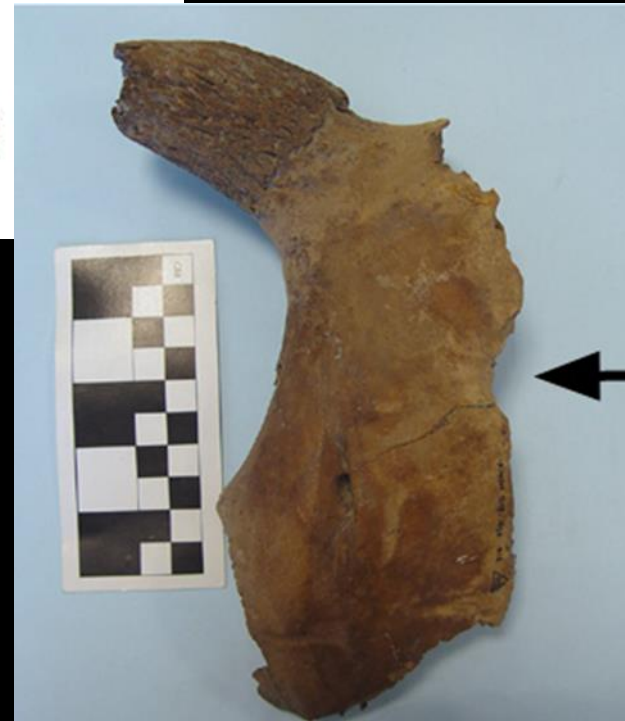


Hasholme logboat
Length: 12.5m
Felling date: 322-
277BC
Tree: 800 years old





Cattle bones from Hasholme Boat



Pole-axe

Bones from at least two cattle were found. The knife marks left on the bones show that these animals had been butchered, but the meat not taken off the bone. Marks on the skull showed that the brains and tongue had been eaten. Horse and sheep bones were also found. The horse bones had knife cuts on them showing that the meat from horses was eaten. (thanks to Krish Seetah McDonald Institute University of Cambridge).



A reconstruction of the landscape at Hasholme in the Iron Age

Dates

400-200 Cal BC (68%) 410-170 Cal BC (95%) (HAR 9234)

520-390 Cal BC (68%) 770-370 Cal BC (95%) (HAR 9235)

Quantification

The heap contained:

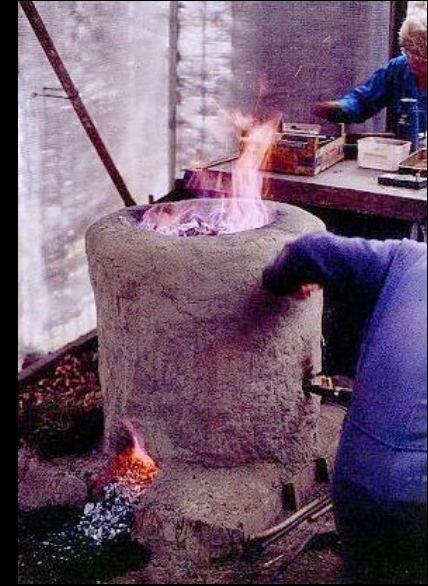
5338kg of slag – (third largest prehistoric slag heap in Britain)

This would have needed: 9120kg ore, 3360kg charcoal – (The annual product of 47 ha of woodland)





Wetwang Chariot
burial 1

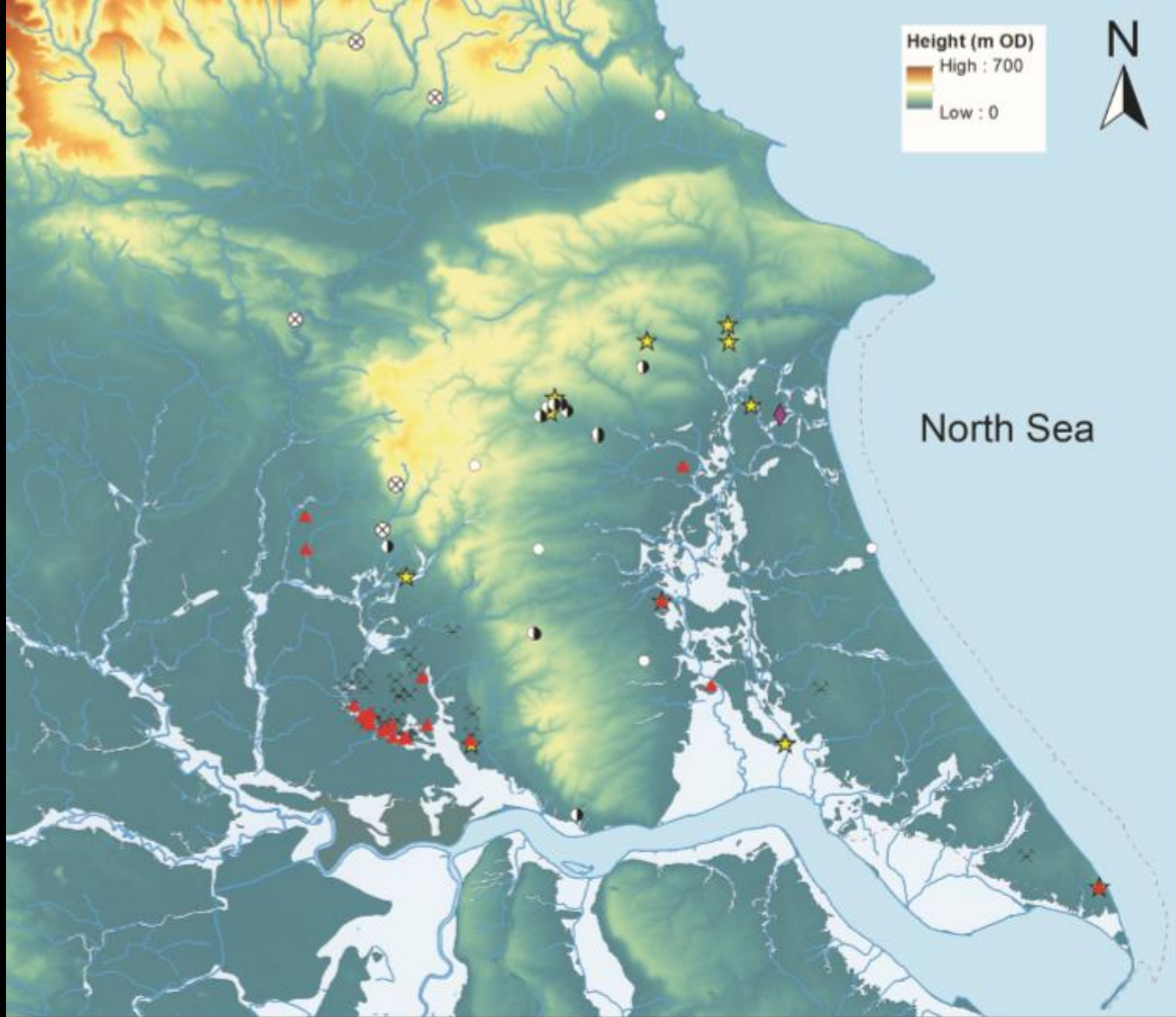


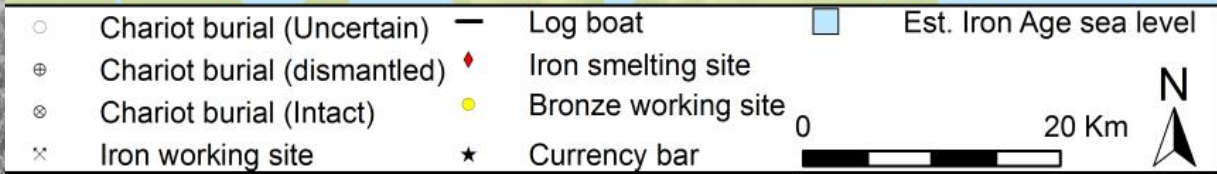
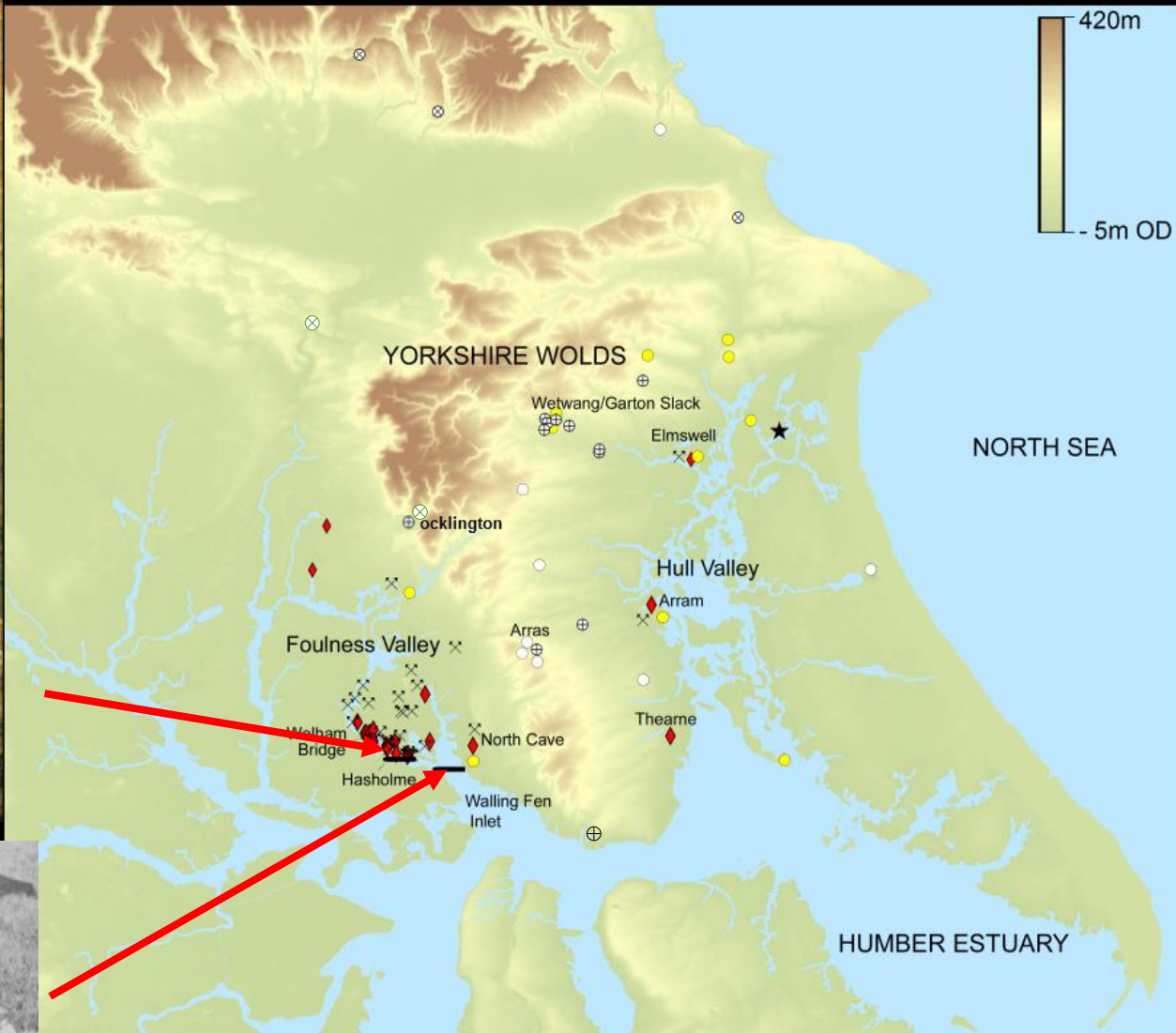
- 1 kg of fully refined bar iron = 8 to 25 person-day's depending on the ore type and the technology used (Crew forthcoming).
- Replica iron tyres made for the Yorkshire Museum, York, by Don Barker = 12 kg
- 36 kg of iron was needed for all the chariot fittings
- c. 288 days of labour at the lowest estimate using Iron Age methods.



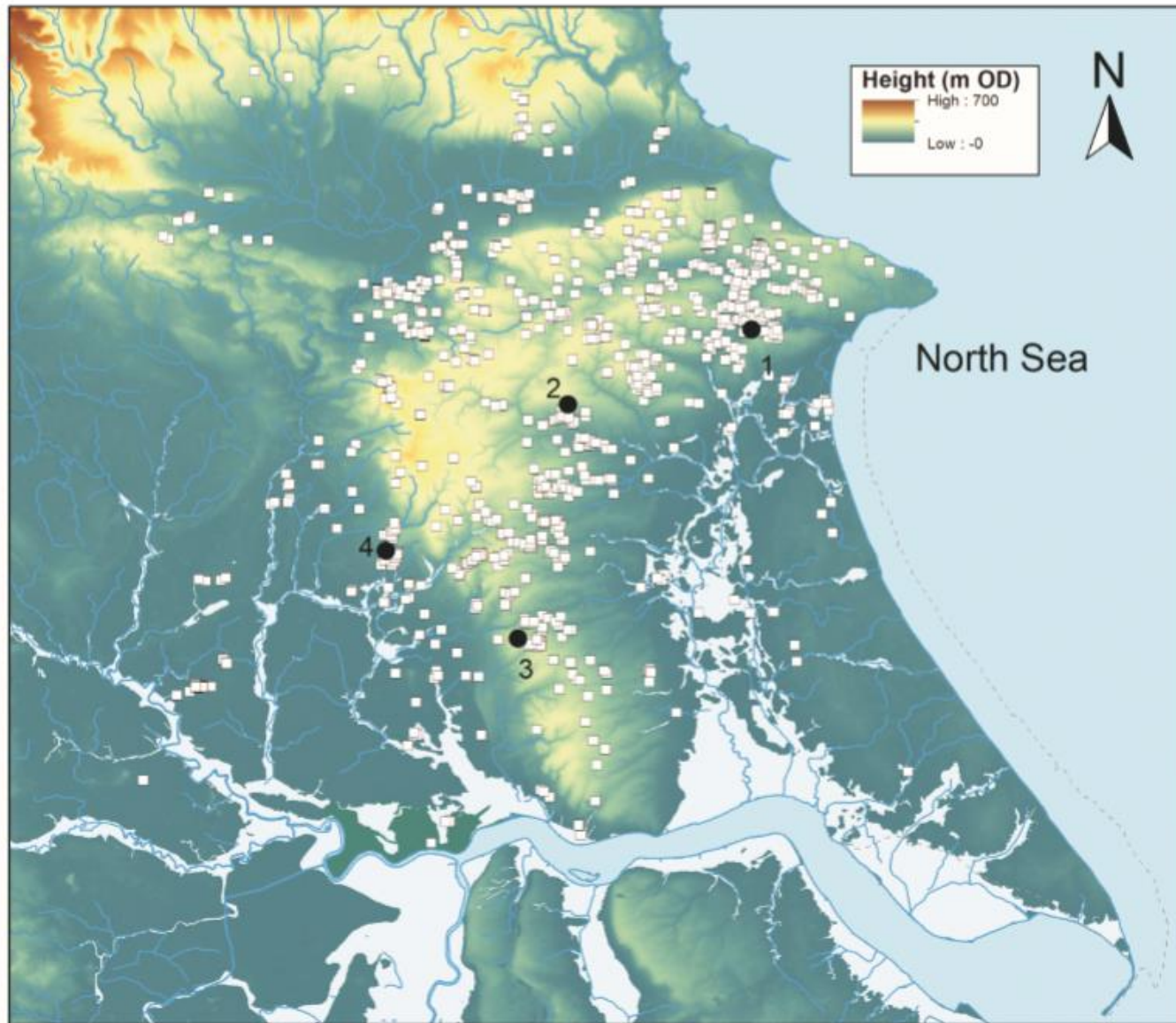


Pocklington chariot burials





Middle Iron Age eastern Yorkshire. Note the effect of the high sea level in the Hull and Foulness valleys. (T. Sparrow).



□ Square Barrow - - - - Estimated coastline

Wetlands

● 1: Rudston/Burton Fleming 2: Wetwang 3: Arras 4: Pocklington



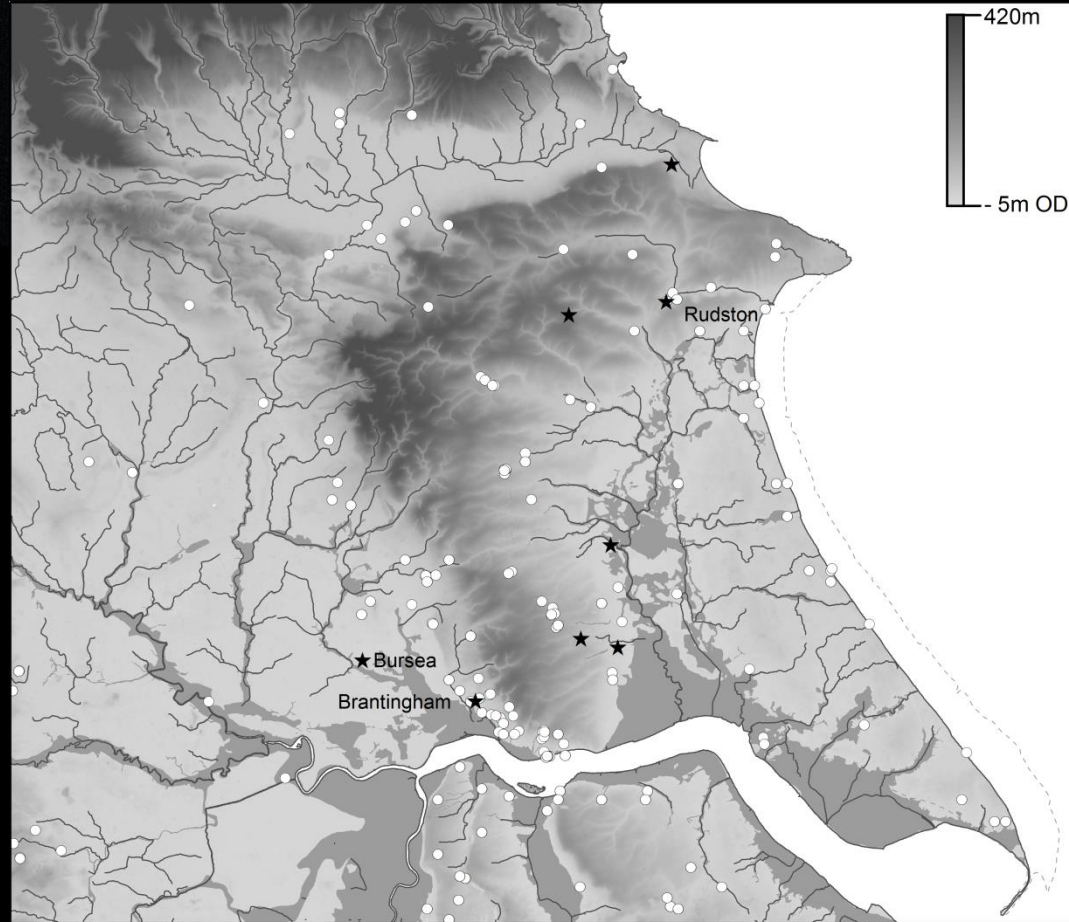


Chariot burial distribution
(Halkon 2013 based on
Anthoons)

Late Iron Age



Part of the hoard of Corieltavian gold staters from Walkington. (20mm diameter) (M. Park courtesy Hull and East Riding Museum: Hull Museums)

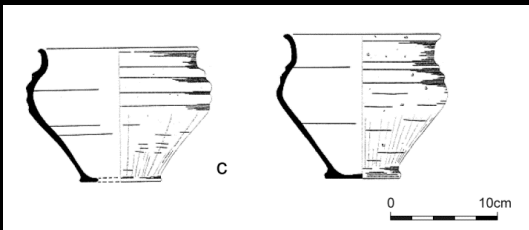


★ Dragonby type pottery

○ Iron age coins

■ Wetlands

0 20 Km



Dragonby type
pottery
Brantingham



Redcliff, North Ferriby, 1988



South Cave weapons cache covered by Dressel 20 amphora sherds (Photo: YAT)



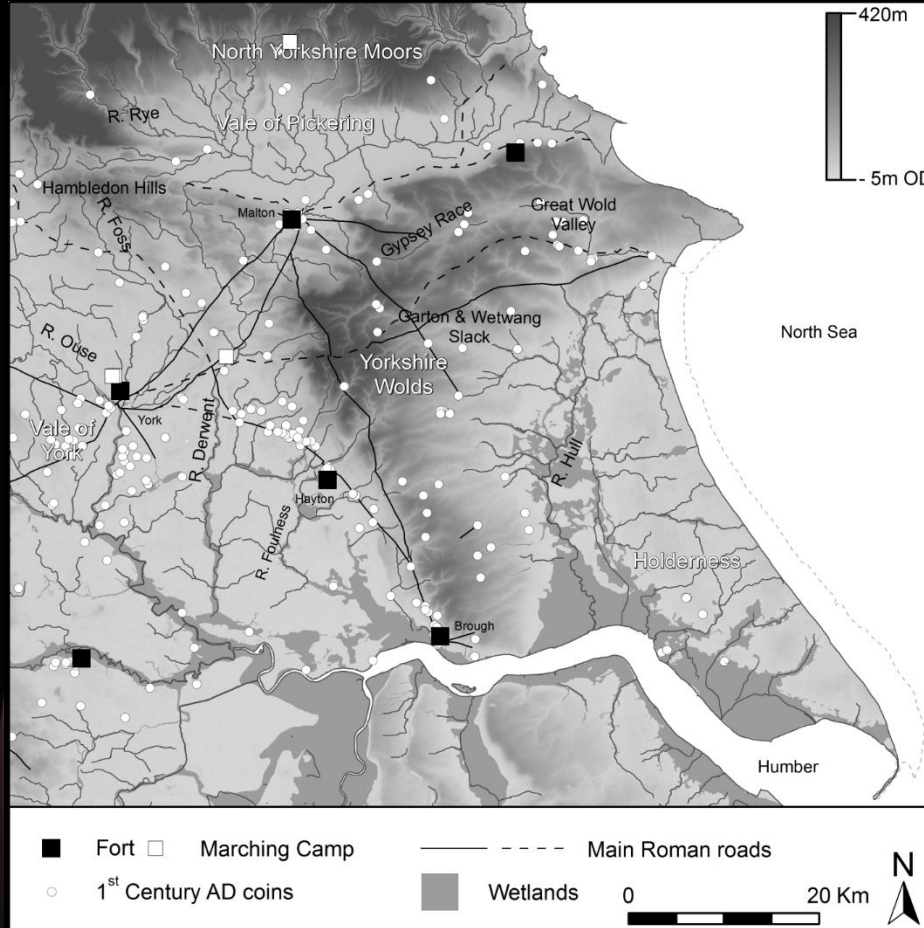
South Cave swords

Photos:
MOLAS/ERYC

A conquest period fort



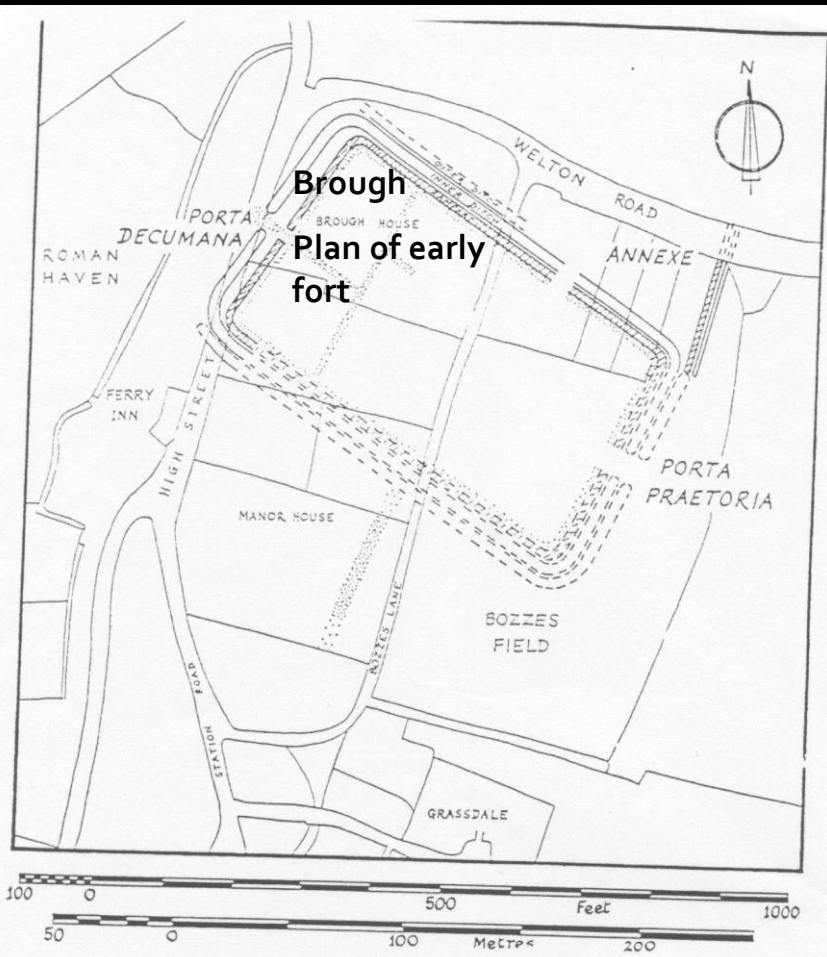
Tombstone of Lucius Duccius Rufinus Signifer of the ninth Legion from York.



A map of eastern Yorkshire the end of the first century A.D. showing find spots, forts and roads against the landscape.



A Roman auxiliary cavalryman of the later first early second century A.D. based on finds from Malton and elsewhere



Brough
Plan of early fort



Hayton Roman fort

Fig 9: Plan of Early Fort and the location of the Annexe found by Corder.
 (source; Wachter, J, 1969)

Aerial view of Brough
looking west 2015

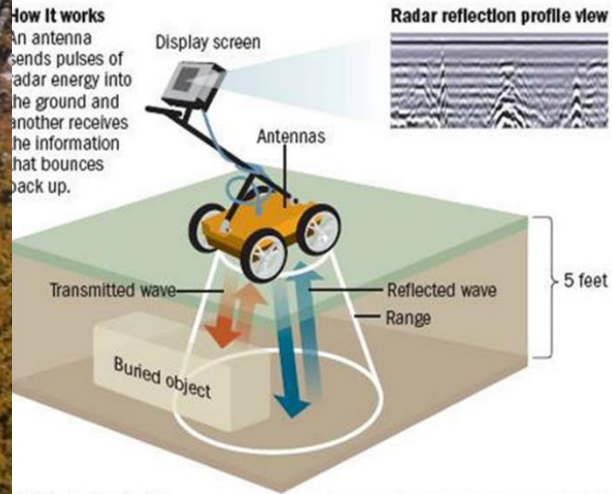


Ground-penetrating radar

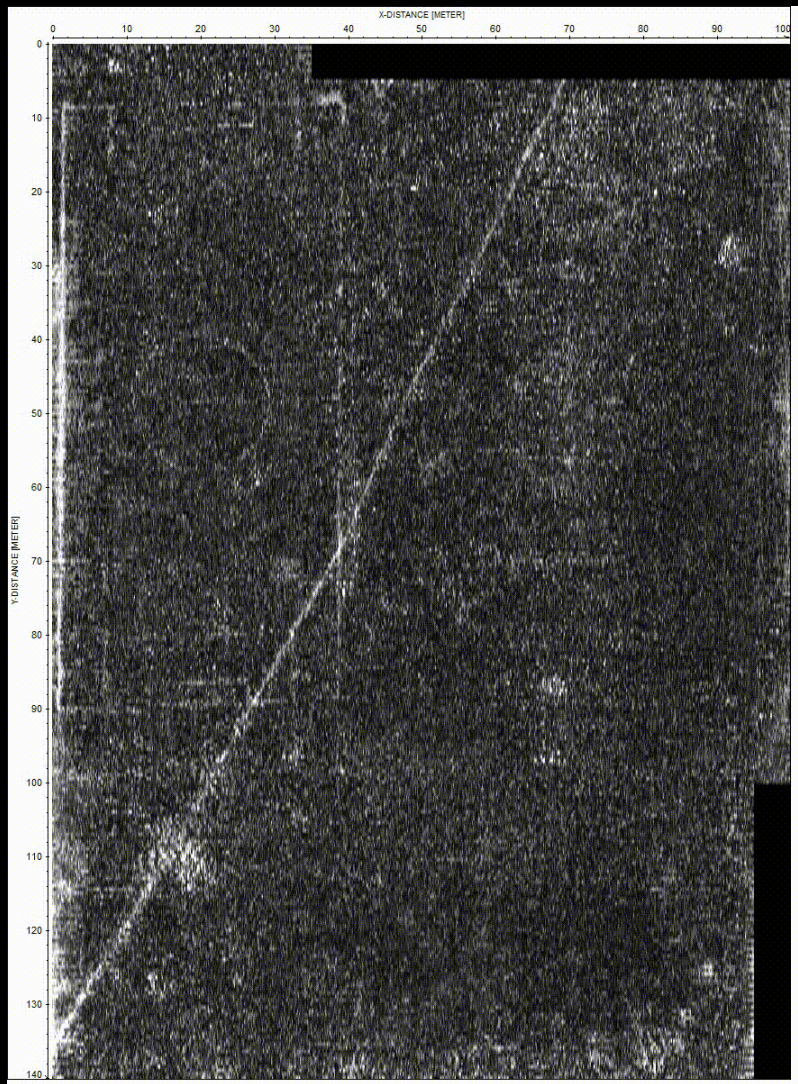
The machine collects data from thousands of pulse reflections each second to help researchers identify objects below ground.

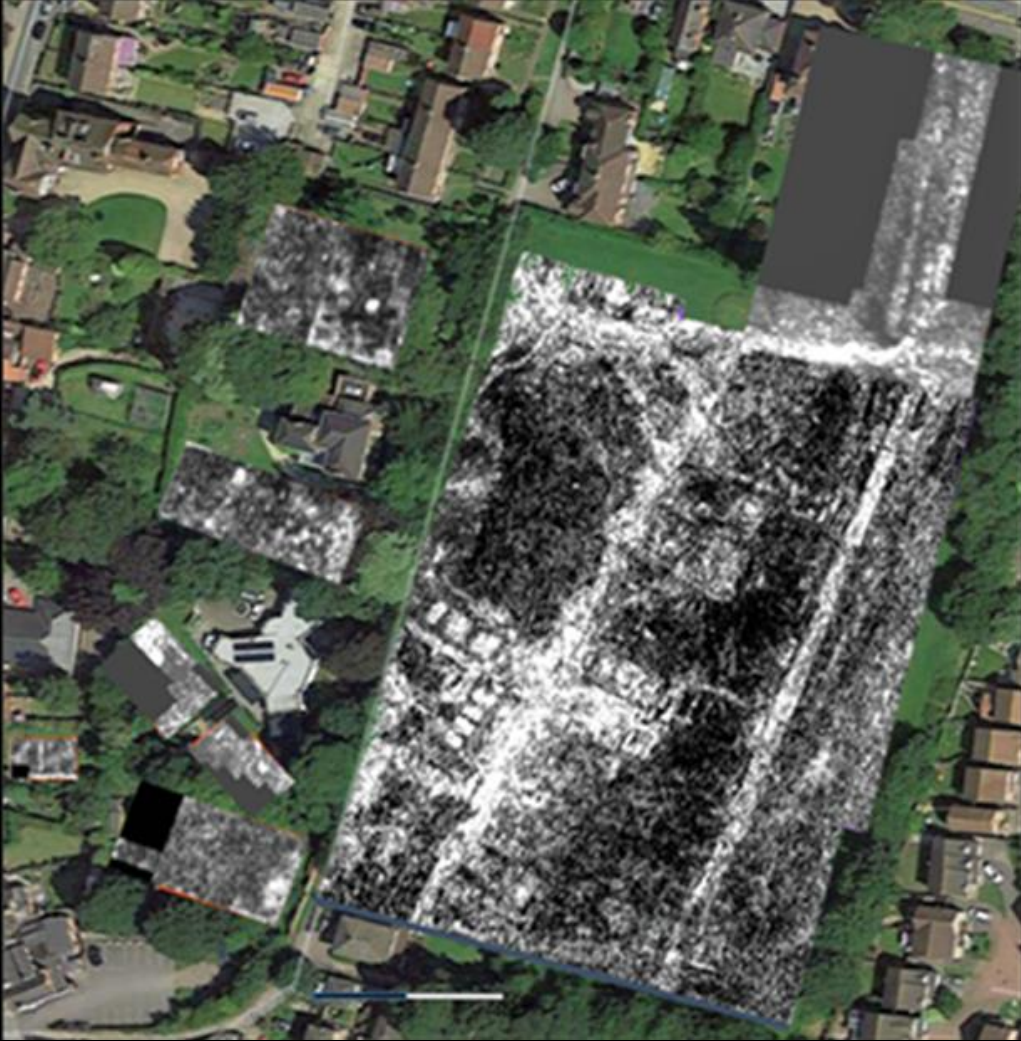
How it works

An antenna sends pulses of radar energy into the ground and another receives the information that bounces back up.



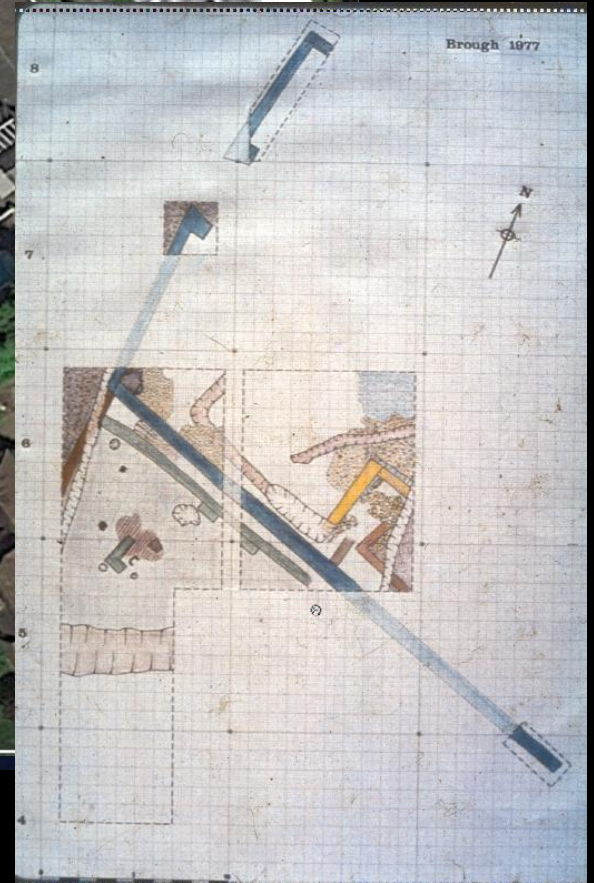
<https://drive.google.com/file/d/1JAD-lwy1q6ooWacupQFywyuoNmCF7pwl/view>

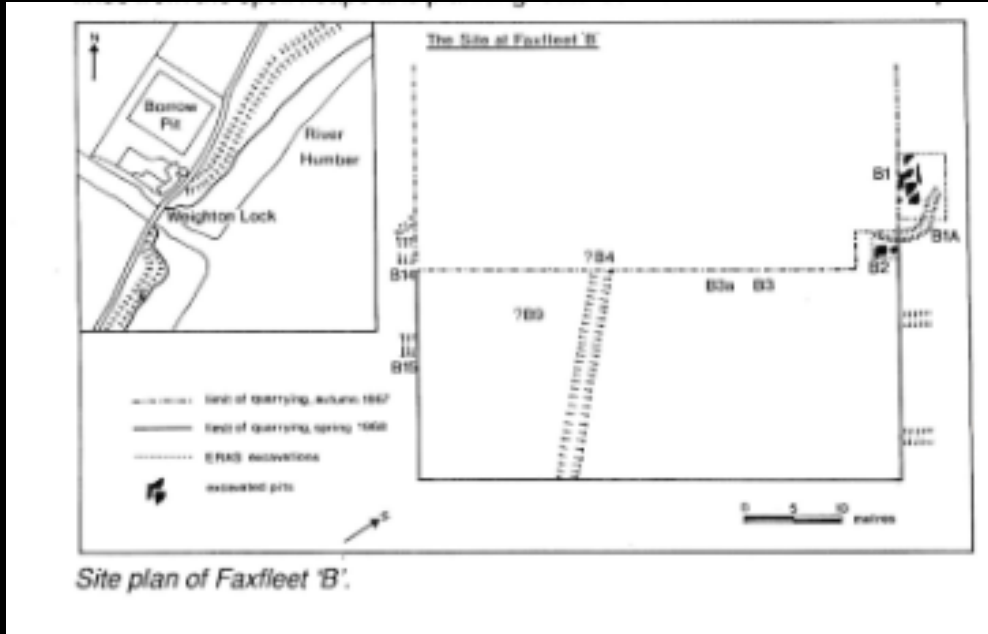




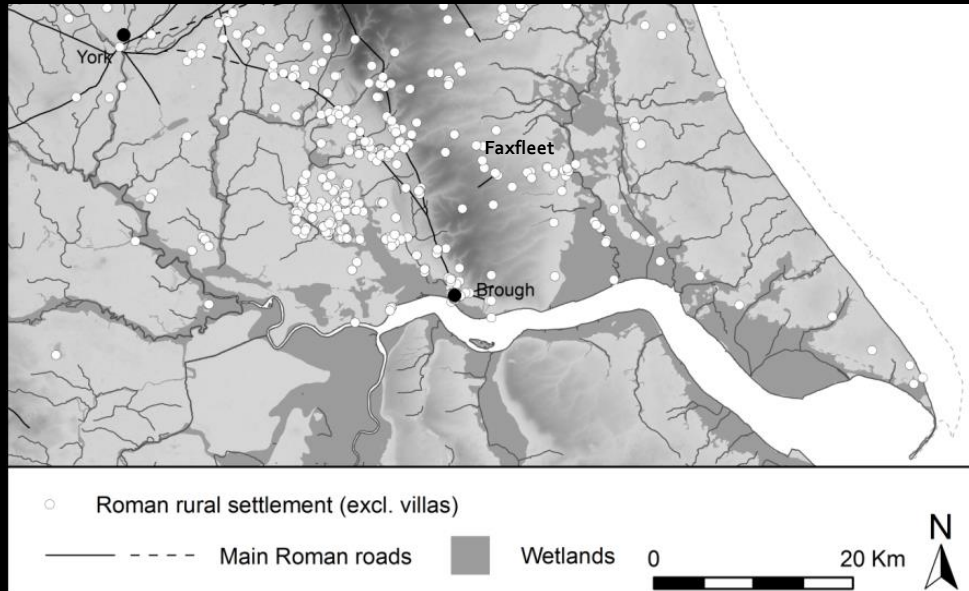
Interpretation by David Staveley

Brough Cave Road

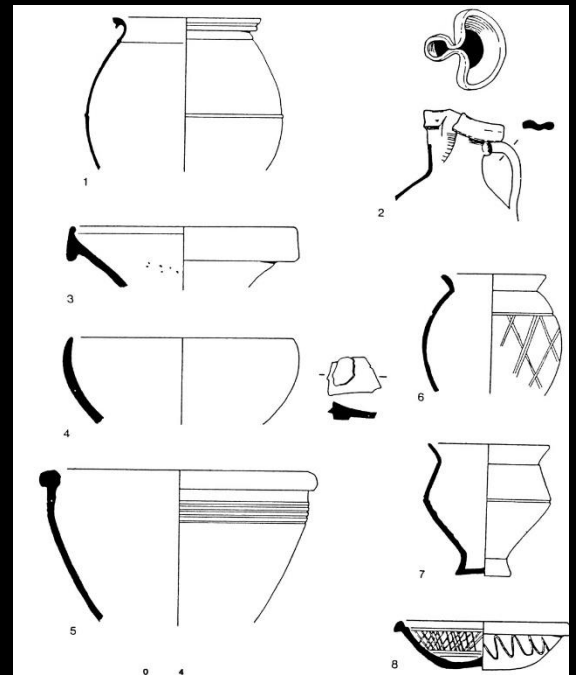




Faxfleet

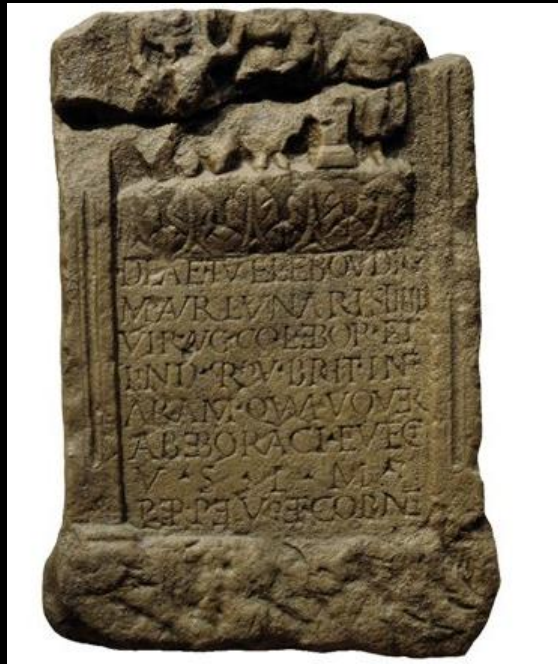


A port?



DEAE TVTELE BOVDIG
M AVR LVNARIS IIIIII
VIR AVG COL EBOR ET
LIND PROV BRIT INF
ARAM QVAM VOVER
AB EBORACI AVECT
V S L M
PERPETVO ET CORNE

'In honour of the Goddess Tutela Boudiga, Marcus Aurelius Lunaris, Sevir Augustalis of the colonia of York and Lincoln, in the province of Lower Britain, set up the altar which he vowed on starting from York. Willingly and rightly did he fulfil his vow, in the consulship of Perpetuus and Cornelianus(AD237)



To the African, Italian, and Gallic Mother Goddesses Marcus Minucius Audens, soldier of the Sixth Legion Victrix and a pilot of the Sixth Legion, willingly, gladly, and deservedly fulfilled his vow

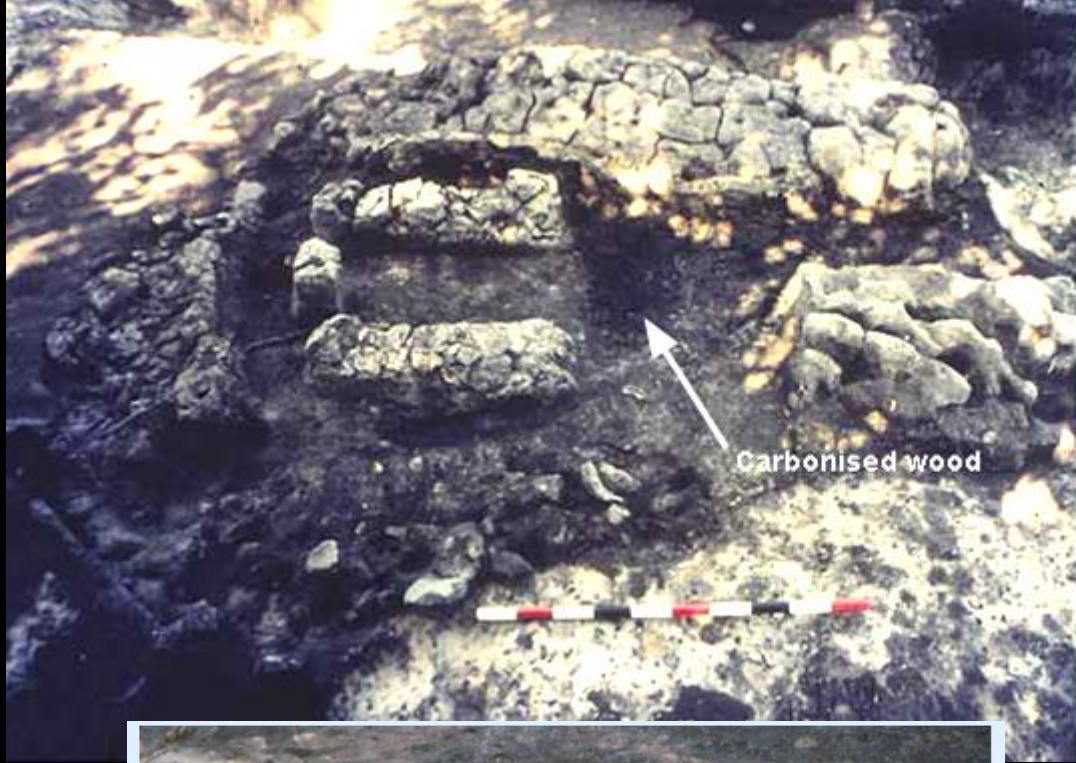
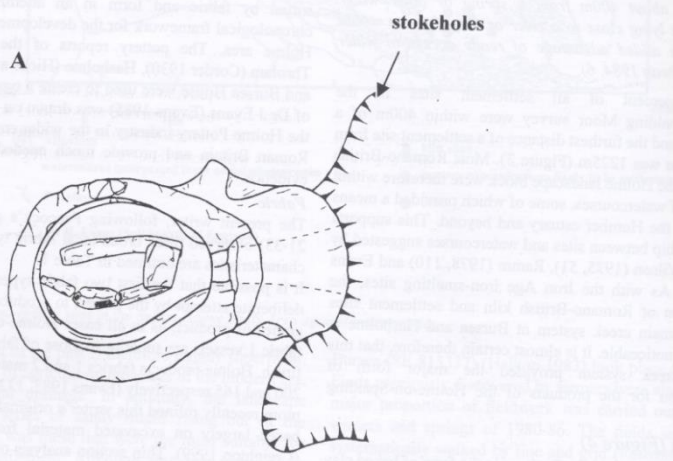
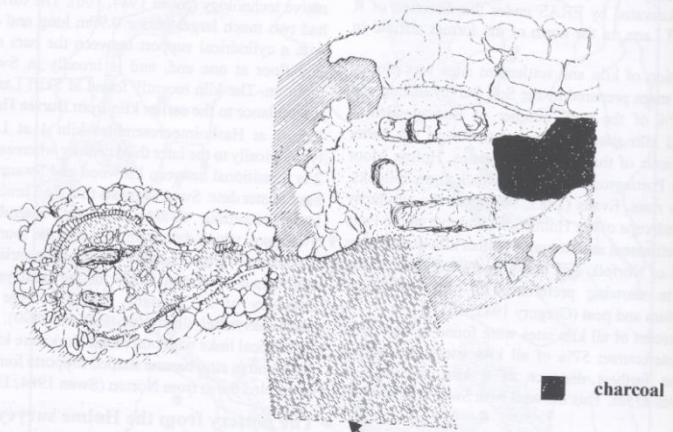




Tyche mosaic
Brantingham

Thanks to
David Neal





Pottery Kilns

Top: Bursea House

Bottom: Hasholme



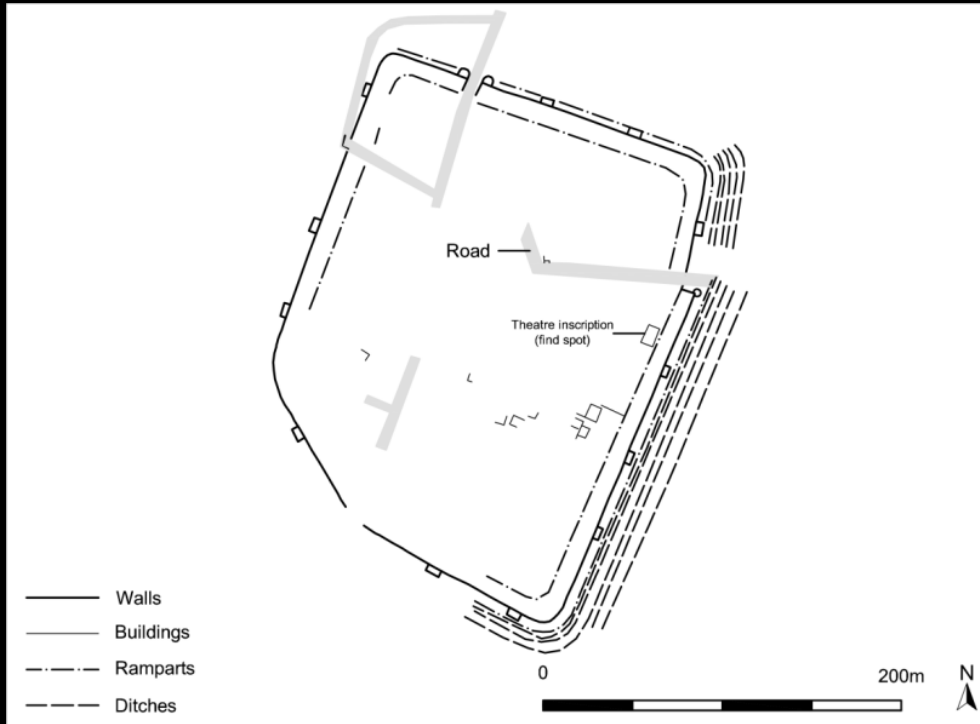
Animal footprint on kiln support



Temporary kiln roof – wetland plants and finger print impressions

Roman period nature preserved

A base for the Roman Navy?



The walled area at Brough. Note the bastions and multiple ditches

Portchester Castle today. Inside the Roman walls is a later castle built by the Normans.



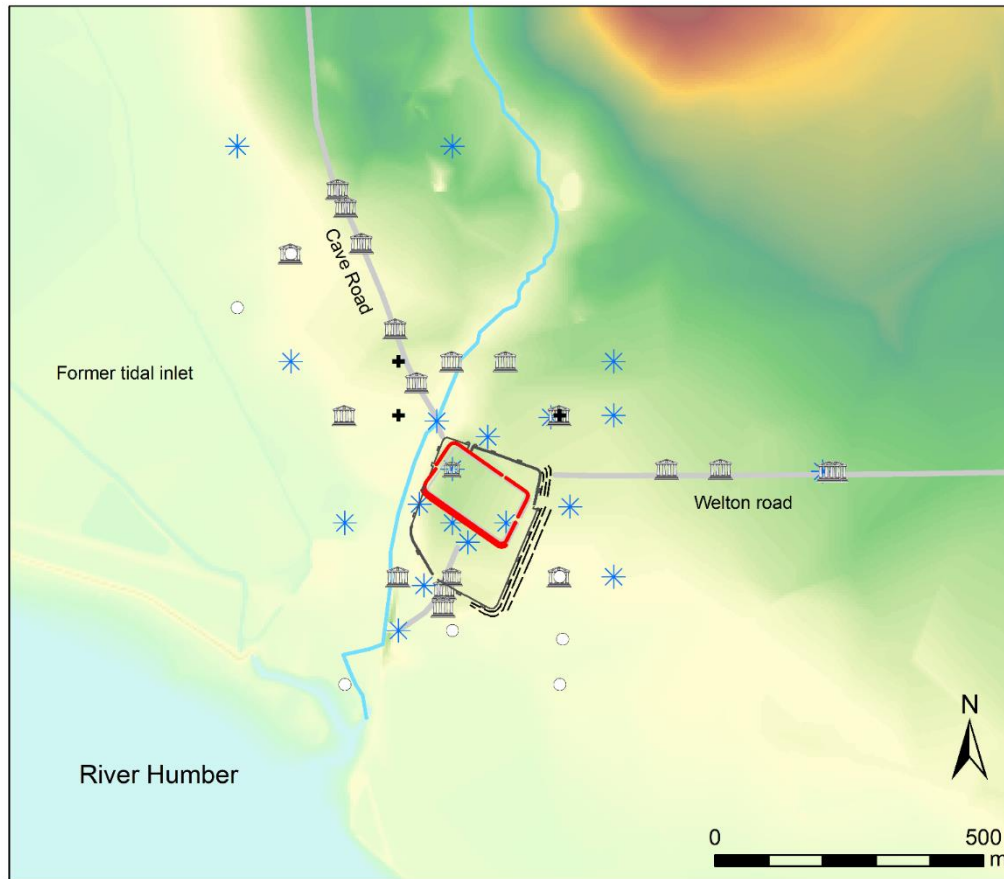


Late Roman soldiers (Comitatus)



Copper alloy Antoninianus of Carausius, c.287-293 AD. Obverse: Draped and cuirassed profile facing right, with radiate crown. Legend: IMP C CARAVSIVS PF AVG

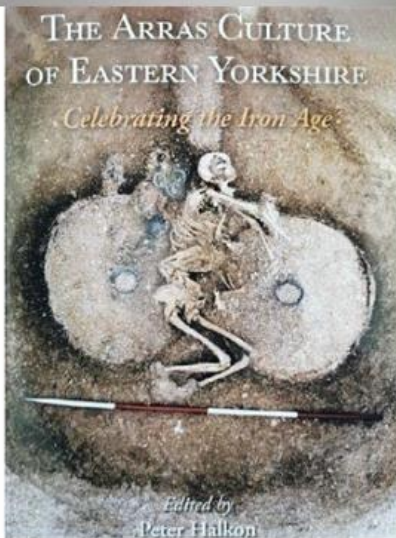
. Obverse: Profile of emperor, with radiate crown. Legend: IMP CALLECTVS PF AVG
Reverse: Image of rowing galley. Legend: VIRTVS AVG



Legend

- | | | | | |
|--|--|--|---|--|
|  Roman activity |  Building |  Burial |  Roman road |  Roman fort |
|  Building |  Building |  Coin |  Watercourse |  Walled enclosure |





MAR
25

Chariots In The Landscape Of Iron Age East Yorkshire

by Faculty of Arts, Cultures & Education

[Follow](#)

Free



[Register](#)

Illustrated talks by Dr Peter Halkon, Senior Lecturer in Archaeology, Hull University & Paula Ware, Director of MAP Archaeological Practice.

About this Event

Chariots in the Landscape of Iron Age East Yorkshire

Featuring the spectacular recent discoveries at Pocklington.

Doors at 6.30pm

Followed by two half an hour lectures from 7pm.

With the opportunity to purchase " The Arras Culture of Eastern Yorkshire" after the lectures have finished.

Event Location - Wilberforce building, University of Hull, Lecture Theatre 1

Date And Time

Wed, 25 March 2020

18:30 - 21:30 GMT

[Add to Calendar](#)

Location

University of Hull
Wilberforce Building
Cottingham Road
Hull
HU6 7RX
[View Map](#)

Thankyou!



With grateful thanks to our sponsors:-



East Riding Archaeological
Research Trust

