

May 2022

This newsletter is given to the parishes and wards in the strategy area, our partners, and other interested parties. It provides an update on work we are doing to develop a new strategy for managing tidal flood risk on and around the Humber, and lets you know about some key flood schemes/projects going on around the estuary. If you wish to receive this newsletter please contact us at HStrategy@environment-agency.gov.uk

Humber 2100+ Strategy

Climate change is the biggest threat we face on the Humber. If unmanaged, sea level rise and extreme weather could have catastrophic consequences for local communities, the environment, the economy and key infrastructure. The **Humber 2100+ Partnership** is made up of 12 local authorities and the Environment Agency supported by Internal Drainage Boards (IDBs) and Natural England. The aim of the strategy is to redefine the strategic approach to managing tidal risk on the Humber, setting the way forward for the next 100 years taking into account predicted sea level rise and climate change. This also includes rivers where tidal flow is the main source of flood risk. For more information, please visit our [StoryMap](https://arcg.is/u1rPj) on the Humber 2100+ strategy <https://arcg.is/u1rPj>



Strategy Update

Key Messages

Recap

In our last newsletter, we stated about reshaping the project in response to partner feedback to ensure collective agreement on how flood risk could be managed in the future. We are moving to a 'stepped approach' to ensure we meet our objectives, which remain the same. However, this approach will ensure partners agree the conclusions of each stage before we move to the next.

As well as agreeing the overall approach with partners, the project team have also been working with them to define what will be covered during Step 1, which will allow us to have an agreed understanding of tidal flood risk, now and in the future.

Recently, we held a Programme Board meeting, which consists of our 12 Local Authority Partners Directors. As a result of this meeting all 12 Local Authorities agreed on structure, so we can work more effectively to move forward together. The Partners also agreed on the broad scope of Step 1 ensuring we complete the evidence base.



By the end of Step 1 we hope to have agreed, as a partnership, on a common understanding and acceptance of the scale and consequences of flood risk, both now and in the future, and the implications of how that risk is managed. We also aim to acknowledge within the Partnership that the way flood risk is currently managed cannot continue indefinitely and that the scale of risk indicates we will need to do things differently in the future.

In parallel with the Step 1 work, we will start planning Step 2, which will see us agreeing a range of approaches for managing tidal risk. We are also endeavouring to better understand how we apply Step 3 (implementation), as part of an Adaptation Pathway. The Humber is one of four national Adaptation Pathway pilot programmes (Thames, Humber, Severn and Yorkshire). The Humber Adaptation Pathway Project will develop a framework for delivering an adaptive pathway on the Humber, to help the partnership navigate the complexities of moving into step 3.

“We are, after all, the greatest problem solvers to have ever existed on Earth. If working apart, we are a force powerful enough to destabilize our planet. Surely working together, we are powerful enough to save it.”

Sir David Attenborough – Opening ceremony of the UN climate change Conference COP26, Glasgow, Scotland, 01-Nov-2021

Scheme Updates

Outstrays to Skeffling Managed Realignment

Background

The **Outstrays to Skeffling Managed Realignment Scheme (OtSMRS)** is a joint venture by the Environment Agency and Associated British Ports (ABP) to realign existing flood embankments and create approximately 175 hectares of new mudflat and saltmarsh habitats on the north bank of the Humber estuary, near Skeffling. The scheme will also include the creation of 75 hectares of wet grassland habitat. It will provide the required compensatory habitat to replace habitat losses at designated sites from sea level rise, and for direct losses resulting from development. It will also enable the Environment Agency to continue to undertake important flood risk management work.



West Overview

Work has restarted after the winter to finish landscaping the area of ‘wet grassland’ habitat with

new ponds, scrapes, roosting islands taking shape and a line of hedging planted along one end of this site, (aerial photo) created last year on the western side and to start building the new embankment on the eastern side. Our contractors have started setting up a compound at the **Outstrays** site. Another compound is currently opening for the eastern site. As work begins on the eastern side, we will need to put in place several temporary footpath closures. These are necessary to keep members of the public safe whilst construction vehicles and staff are working on the site. For more information, please contact yorksengagement@environment-agency.gov.uk

Over the winter, vegetation clearance on the eastern side was carried out prior to bird nesting season. Further surveys are ongoing as spring progresses with regular inspections from an ecologist. An archaeological assessment will also happen ahead of the demolition of the Nissen hut off Humber Lane, as it sits on the path of the new embankment.

customer service line
03708 506 506

incident hotline
0800 80 70 60

floodline
0345 988 1188
0845 988 1188

www.gov.uk/environment-agency



Nissen hut



Parish Councillors site visit

Before winter arrived last year, our contractors finished building an access track to the embankment and strengthened it with clay on the landward side as a winter readiness measure. Once environmental restrictions are lifted, in March, clay and rock armour will be placed on the external side. This recovery work will take approximately four weeks to complete.

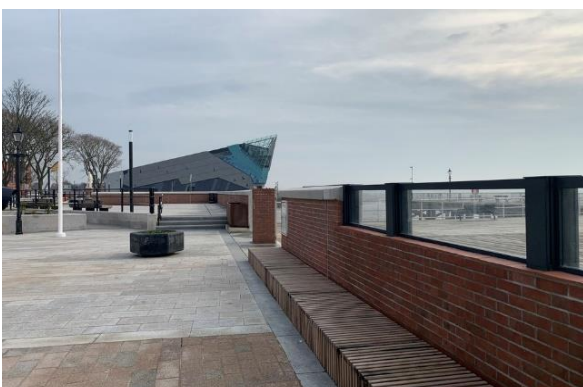
In October project staff organised a site visit for local parish councillors and a public drop-in at Welwick Village Hall to show some of the finds from the archaeological surveys carried out in the summer. Both events were successful, with over 50 residents attending the drop-in, and re-established contact with the local community following COVID-19 restrictions. Subsequent completion of the archaeological surveys in the summer, York Archaeological Trust will produce a detailed report on findings due imminently.

Humber Hull Frontages (HHF) Flood Defence Improvements

Back-ground

The **Humber Hull Frontage (HHF) Flood Defence Improvements** reduces tidal flood risk to 113,000 properties. The scheme has upgraded 7km of flood defences along the edge of the Humber Estuary.

The Environment Agency worked in partnership with Hull City Council, to use materials and a colour palette to blend the new defences into the existing landscape. This was particularly important in residential areas and areas of cultural significance to the city. Glazed panels in the flood walls at several locations maintain estuary views from the footpaths running parallel to the estuary which form part of the popular Trans Pennine Trail, as well as from homes at Victoria Dock Village.



Humber Hull Frontages, Victoria Pier



Official Opening Ceremony

A new promenade has been built on the landward side of the new flood defence where access ramps, steps and seating areas have been created. New street furniture has been installed alongside the original street furniture and artwork. The scheme was formally opened on Thursday 3rd March by Floods Minister, Rebecca Pow, and Environment Agency Chair, Emma Howard-Boyd. Paul Stockhill, also gave a short presentation bringing to life the journey of the scheme.

customer service line
03708 506 506

incident hotline
0800 80 70 60

floodline
0345 988 1188
0845 988 1188

www.gov.uk/environment-agency

Hessle Foreshore Tidal Defences

Background Hessle Foreshore Tidal Defence project (HFTD) will construct a combination of defences to reduce the risk of tidal flooding to the Hessle area. It will reduce tidal flood risk to over 4000 residential and commercial properties when complete. It is funded by a combination of FCERM Grant in Aid, Local Growth Funding and European Regional Development Funding.

The scheme is now fully complete and includes works to Fleet Drain Sluice, the installation of a concrete flood wall along the A63 and the construction of a glass and concrete wall along the southern side of Cliff Road, including raising the road underneath the Humber Bridge.

The scheme has been operated over the winter with pedestrian and vehicular flood gates being closed to provide protection during high tides



Fleet Drain Sluice; A63 Barrier; Cliff Road Defences

South Ferriby and Winterringham Ings Sea Defence Improvements

Background The South Ferriby flood alleviation scheme reduces the risk of tidal flooding to 150 homes, businesses and the Cemex cement plant. It is a partnership scheme between the Environment Agency, North Lincolnshire Council and Cemex.

Mitigation works over the winter have been completed including over 400 trees and hedges planted at South Ferriby and Winterringham including the planting of a community orchard.



Photo of the opening event

customer service line
03708 506 506

incident hotline
0800 80 70 60

floodline
0345 988 1188
0845 988 1188

www.gov.uk/environment-agency

The 2.7km **South Ferriby** sea defences and a flood gate on the A1077 was awarded a 'Certificate of Excellence' from the Yorkshire and Humber Institution of Civil Engineers at their gala dinner in early March narrowly missing out to the winner - Mytholmroyd Flood Alleviation Scheme. A massive well done to the whole project team on this great achievement.



South Ferriby project team

In **Winteringham**, for properties that are at risk of tidal flooding a Property Flood Resilience consultation has begun. A report has been produced after the completion of the initial property surveys, which states recommendations for appropriate property flood resilience measures. A procurement process is ongoing to obtain the services of an installation contractor.

Donna Nook

Background

Donna Nook is a managed realignment site and has opened up 106ha of land to intertidal habitat. The project reduces the risk of flooding to 1200 properties communities, businesses and 13,000 ha agricultural land in the area and has helped reproduce valuable intertidal habitats to compensate for losses in the Humber Estuary.



Breach site at high water



Rich & valuable sediments accumulating on site

The Environment Agency has now completed all outstanding construction activities at the site and demobilised for the last time. The Little Tern Islands are now managed by the Environment Agency's Mablethorpe Field Team and works to clear the scrub off the islands have been completed.

We continue to progress monitoring activities and anticipate receipt of the comparison reports against the 2018 pre-breach data shortly. This work is essential in understanding the

realignment site's performance in compensating for lost habitat in the Outer South of the Humber Estuary and in assessing Water Framework Directive requirements.

South Humber -Developing Projects

Background

The Environment Agency is continuing to progress three priority projects that have been indicatively allocated funding in the 2021-27 Capital Investment Programme. Overall combined outcomes could lead to reduced flood risk to more than 3,000 properties, existing major industrial sites and significant infrastructure, as well as enterprise zones. The associated benefits/outcomes that justify government funding have been strategically apportioned with other Risk Management Authorities to allow their projects within the tidal floodplain to progress.

Stallingborough 3 – this scheme covers approximately 4.5km of the tidal defences between the ports of Immingham and Grimsby, to improve the effectiveness, sustainability, and resilience of both the Main River and International Drainage Board gravity systems. The funding was approved in January to progress the business case and the project team are working with consultants to agree the scope. The project team are exploring the availability of local land to house both the construction compounds and material storage areas. Various proactive consultations with Planners,

customer service line
03708 506 506

incident hotline
0800 80 70 60

floodline
0345 988 1188
0845 988 1188

www.gov.uk/environment-agency

Natural England and MMO have been undertaken to ensure the required consents and permits are in place ahead of construction from Spring 2023 in two phases.

Barton-New Holland – The project team have been working hard with the suppliers to agree the scope and price the contract. In the meantime, several key activities are continuing. The strategic modelling is nearing completion, to ensure the scheme doesn't have a detrimental impact elsewhere around the Humber Estuary. The first phase of the ecological surveys has been completed and the second is to be completed soon. The long list of options has been completed across the 8 frontage sub-sections. Local engagement has been strengthened by the establishment of the project's Resilience Advisory Group, and further communications with the local communities through existing media. The complex business case is on track for completion by around the end of 2024.

Halton Marshes Phase 2 - The Environment Agency have provided further guidance to North Lincolnshire Council staff to advance the development of the business case. Both parties, with the site developer, are actively exploring the best delivery method to accelerate the delivery of this scheme within the 2021-27 Investment Programme, and to secure the considerable partnership funding required to unlock the allocated FCERM Grant in Aid. The scheme will need to align with both the Local Plan and the current Humber flood risk management strategy, whilst being compatible with the environmental designations within the Humber Estuary.

Working in Partnership

Alkborough Flats



Alkborough flats is a long-standing, partnership managed, realignment site conceived in 2006 with Association of British Ports, Environment Agency, Natural England, and North Lincolnshire Council. Recently Alkborough has received a lot of attention with a visit from some French engineers and the director of Rewilding Britain.

Two researchers from Sorbonne University in France visited on 27th April to look at Alkborough as an example of a successful management realignment site and how we have done it, including flood risk management, conservation, ecological restoration, and engagement with local communities. The visit went well and both Marina and Alexia were very interested in how well Alkborough was doing and were able to take information back home.

On the 28th April Alistair Driver the Director of Rewilding Britain visited Alkborough. Prior to Rewilding Britain, Alistair was the head of Environment Agency conservation and wanted to visit Alkborough to see its progress but also to see if it could fit in as a case study in the Rewilding Network. Alistair enjoyed his time at Alkborough and as a keen bird watcher he was pleased to spot Bittern, Bearded Reedling, Water Rail, Marsh Harrier, Spoonbill, Avocet, Black-tailed Godwit and Barnacle Geese.



Sorbonne University Students at Alkborough



Alastair Driver's visit to Alkborough

For more information about Alkborough - [Managed realignment | Yorkshire & Humber Climate Commission \(yorksandhumberclimate.org.uk\)](https://www.yorkshireandhumberclimate.com/managed-realignment)

customer service line
03708 506 506

incident hotline
0800 80 70 60

floodline
0345 988 1188
0845 988 1188

www.gov.uk/environment-agency

How resilient are you?

Are you prepared for future floods?

Although defences reduce the likelihood of flooding, the risk can never be removed entirely. Flooding can happen at any time and from a variety of sources. To begin to be more resilient take some simple practical steps to help reduce the impact of flooding to your home or business.

To find out if you are at risk, how to prepare, stay safe and sign up (free) for flood warnings visit www.gov.uk/flood or call Floodline on **0345 988 1188**.



Contact us



<https://consult.environment-agency.gov.uk/humber/strategyreview>



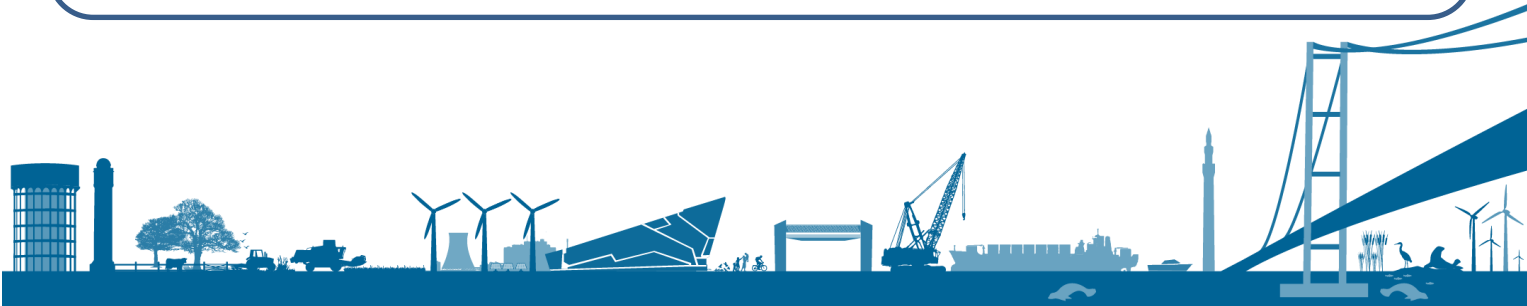
HStrategy@environment-agency.gov.uk



@Humber_Strategy



@HumberStrategy



customer service line
03708 506 506

incident hotline
0800 80 70 60

floodline
0345 988 1188
0845 988 1188

www.gov.uk/environment-agency