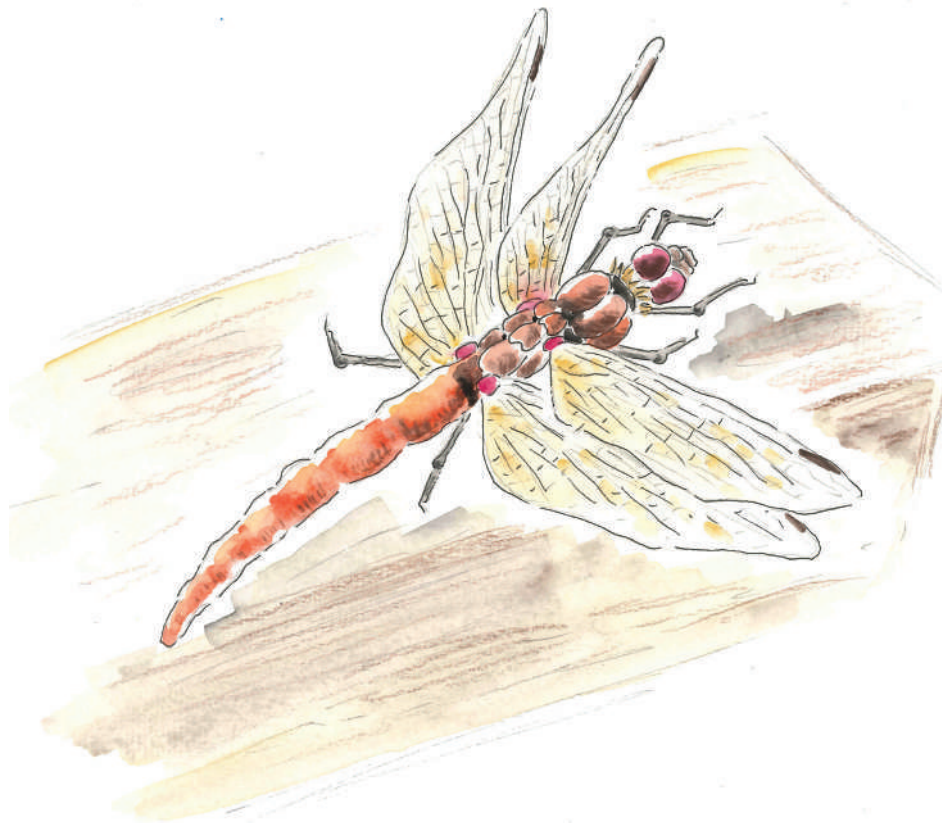


The Barton & Barrow Claypits **HERITAGE TRAIL**



Original artwork by
Cheryl Cullingford

17 Hoe Hill Pit

Hoe Hill Pit directly behind Hoe Hill House was the earliest and deepest digging. The pond is owned by the Victory Angling Club and is a private fishing pond. The private road alongside the pond leads to Pasture Road North.

The Hoe Hill brickyard ceased to be used from 1967. The diggings became flooded, and nature reclaimed the industrial site forming reedbeds on the higher land and ponds for voles and waterfowl. You can see a single unused chimney which was part of the earlier kiln system.

Hoe Hill Pit has an area of 5.6 ha. It may be connected to the water table and links with Marshlands Pit in the north-western corner. An outlet flows under the road in the north-eastern corner into a ditch, which connects with Pasture Wharf. When the blow wells are flowing, Hoe Hill Pit feeds water into Pasture Wharf.

There are reedbeds at the southern end and along the eastern edge. Reed, great willowherb, yellow flag, hawthorn scrub, hazel, ash and willow are present in the other borders. The flooding of 2013 brought 450 mm of saltwater into Hoe Hill Pit. This influx of nutrient-rich water from the estuary contributed to significant weed problems.

In past years bitterns, great crested grebes, little grebes, kingfishers, marsh harriers, reed warblers, sedge warblers, water rails and barn owls have been present on the site.

This project is supported by:



waters'edge
country park & visitor centre



University Centre
Grimsby



**shrink
map**
.uk